



Ocularis™

Installation & Licensing Guide

On-Net Surveillance Systems, Inc.
One Blue Hill Plaza, 7th Floor, PO Box 1555
Pearl River, NY 10965
Phone: (845) 732-7900 | Fax: (845) 732-7999
Web: www.onssi.com

Ocularis 2.0.2

000110711-1725-OC2.0.2(3.2.0.243)

Legal Notice

This product manual is intended for general information purposes only, and due care has been taken in its preparation.

Any risk arising from the use of this information rests with the recipient, and nothing herein should be construed as constituting any kind of warranty.

© 2002-2011 On-Net Surveillance Systems, Inc. All rights reserved. OnSSI and the 'Eye' logo are registered trademarks of On-Net Surveillance Systems, Inc. Ocularis, Ocularis Client, Ocularis Client Lite, Ocularis Video Synopsis, NetEVS, NetDVMS, NetDVR, ProSight, NetGuard, NetGuard-EVS, NetSwitcher, NetMatrix, NetCentral, NetTransact, NetPDA and NetCell are trademarks of On-Net Surveillance Systems, Inc. All other trademarks are property of their respective owners.

On-Net Surveillance Systems, Inc. reserves the right to change product specifications without prior notice.

Patents Applied For in the U.S. and Abroad

Table of Contents

INTRODUCTION.....	3
OCULARIS FEATURES SETS.....	3
GETTING STARTED WITH OCULARIS.....	4
MINIMUM SYSTEM REQUIREMENTS.....	4
INSTALLATION PROCEDURES	4
INSTALLING OCULARIS ON A NEW SYSTEM.....	4
UPGRADING TO OCULARIS VERSION 2.0.2.....	6
Upgrading Recorders	6
OCULARIS INSTALLATION & CONFIGURATION.....	7
DOWNLOAD THE OCULARIS INSTALLATION FILES.....	8
EXTRACT OCULARIS INSTALLATION FILES	9
INSTALLING OCULARIS BASE	12
<i>To Install Ocularis Base</i>	<i>12</i>
LICENSING OCULARIS BASE	15
<i>To License Ocularis Base</i>	<i>15</i>
INSTALLING OCULARIS COMPONENTS	18
OCULARIS COMPONENT LOCATION.....	18
Basic System.....	18
Distributed System	18
Which system is best for me?.....	18
<i>To Access the Ocularis Component Installation Page.....</i>	<i>19</i>
INSTALLING OCULARIS ADMINISTRATOR	22
<i>To Install Ocularis Administrator.....</i>	<i>22</i>
INSTALLING OCULARIS CLIENT	23
<i>To Install Ocularis Client</i>	<i>23</i>
OCULARIS RECORDING COMPONENTS	24
OCULARIS PS, OCULARIS IS, AND OCULARIS CS	24
<i>To Install a Recording Component (for Ocularis PS, Ocularis IS and Ocularis CS).....</i>	<i>24</i>
OCULARIS ES	26
<i>To Install The Ocularis ES Recording Component.....</i>	<i>26</i>
<i>To Install the Management Server (RC-E Server).....</i>	<i>26</i>
<i>To Access the Recorder Downloads Web Page</i>	<i>29</i>
<i>To Install the Recording Server (RC-E Recorder).....</i>	<i>29</i>
<i>To Configure RC-E for IP Address Resolution.....</i>	<i>30</i>
<i>To Install the RC-E Manager (Management Client).....</i>	<i>31</i>
<i>To Install the Log Server</i>	<i>31</i>
<i>To Install Video Device Drivers</i>	<i>32</i>
<i>To Install a Failover Server (optional).....</i>	<i>32</i>
Synchronize Time on Servers.....	33
OCULARIS EVENT PROXIES.....	34
RC-C / RC-I EVENT PROXY.....	34
<i>To Update the RC-C / RC-I Event Proxy.....</i>	<i>34</i>
Configuring the RC-C / RC-I Event Proxy.....	35
<i>To Configure Event Forwarding in the Management Application for RC-C or RC-I.....</i>	<i>35</i>

To Configure Parameters in the RC-C / RC-I Event Proxy 36
To Restart the RC-C / RC-I Event Proxy 36
RC-E EVENT PROXY 37
To Update the RC-E Event Proxy 37
To Configure Parameters in the RC-E Event Proxy 38
To Modify Parameters in the RC-E Event Proxy 39
CONTACT INFORMATION 40

Introduction

Ocularis version 2.0.2 is the latest version of OnSSI's flagship IP-video and security platform. Ocularis represents the latest evolution in IP-video surveillance and security. As an integrated video and event management platform, it includes a full-fledged video management system for streaming, recording and managing an unlimited number of cameras at multiple sites.

Ocularis Features Sets

Ocularis version 2.0.2 is offered in four feature sets, designed to meet the needs of organizations of all sizes and structures, from single-location retail outlets or schools, to multiple-site, complex municipal and campus installations.

- **Ocularis PS** – for organizations with limited active live monitoring and alerting.
- **Ocularis IS** – competitively priced for organizations operating at multiple locations with no size limitations.
- **Ocularis CS** – For large distributed organizations with extended command and control needs.
- **Ocularis ES** – brings a higher level of efficiency to recording system maintenance.



The **Ocularis™ Platform**, regardless of feature set, consists of the following components:

- **Ocularis Base** – server software application which regulates and manages the flow of data between video client users, recording servers, video wall management and an integrated alerting application.
- **Ocularis Administrator** - The front end software application used to manage Ocularis Base.
- **Ocularis Recorder** - An application is required to supply camera configuration and recording.
- **Ocularis Client** – OnSSI's award winning video client application.
- **Optional Add-On Applications** – these include Remote Video Wall and Video Content Analytics. Add-Ons are restricted based upon Ocularis feature set. Add-ons are made available as they are introduced. See our website www.onssi.com or call OnSSI Sales for information on Ocularis Add-Ons.

This manual provides detailed instructions for installing Ocularis and its components. For a more concise installation guide, see the *Ocularis Quick Install Guide*.

Getting Started with Ocularis

Minimum System Requirements

Requirements for individual components may be found on the www.onssi.com website.

Installation Procedures

This section discusses the following:

- [Installing Ocularis on a New System](#)
- [Upgrading to Ocularis Version 2.0.x](#)

Installing Ocularis on a New System

Regardless of feature set, a recommended process flow to prepare the video management environment with Ocularis on a new system is as follows:

1. Download and extract the Ocularis feature set installation file from www.onssi.com.
2. Install the Ocularis Base software component.
 - In large environments or if using Ocularis ES, this component should be installed on a dedicated server. In some cases, a dedicated server is not necessary. For Ocularis PS, IS and CS, the Ocularis Base may be installed on the same PC as the other Ocularis components. As the system grows, additional recording components may be added.
 - System requirements may be found on the www.onssi.com website for detailed hardware specifications.
 - Refer to [Installing Ocularis Base](#) on page 8 for details on the software installation.
 - Anti-Virus software must be disabled during the installation of the Ocularis Base component.
3. License Ocularis.
 - Prior to using Ocularis components, you must license your copy of Ocularis Base. See [Licensing Ocularis Base](#) on page 15 for more details on how to activate the software.
4. Install the *Ocularis Administrator* application.
 - This component is typically installed on a workstation with network connectivity to the Ocularis Base component. It may reside on the same PC as the Base provided that graphic card requirements are met.
 - Refer to [Installing Ocularis Administrator](#) on page 22 for details on the software installation.
5. Install the Ocularis recording component software.
 - For Ocularis PS, IS and CS, installation of the recording component includes the installation of the RC-P, RC-I and RC-C recorders as well as the event proxy for IS and CS installations. The corresponding event proxy will be installed on the same machine as the RC-X software.
 - For Ocularis ES, the recording component contains several components. Install these in the following order:
 - 1.) RC-E Server (Management Server)
 - 2.) RC-E Recording Server (includes RC-E Event Proxy)
 - 3.) RC-E Manager (Management Client)
 - 4.) RC-E Failover Server(s) [*Optional*]

6. Create at least one administrative account on the recording component with full access rights.
 - Use the *Management Application* for Ocularis PS, IS or CS
 - Use the *RC-E Manager* for Ocularis ES.
7. Add and configure the IP video cameras and devices on the recording component.
8. Install the *Ocularis Client* on at least one workstation.
 - See [Installing Ocularis Client](#) on page 23 for additional instructions on installation.
9. Configure Ocularis Base using *Ocularis Administrator*.
 - Refer to the *Ocularis Administrator User Manual* for further instructions.
10. Test connectivity of cameras by logging into Ocularis Base with *Ocularis Client*.
11. Install any remaining workstations with *Ocularis Client*.
12. For *Ocularis ES*, *Ocularis CS* or *Ocularis IS* configure the event proxy to forward events to the Ocularis Base Server.
 - Installation and configuration of Event Proxies can be found at the end of this document.

Upgrading to Ocularis Version 2.0.2

- Is it not necessary to manually uninstall any of the Ocularis components in order to upgrade from an earlier version to version 2.0.2. Simply install the new version on top of the existing version. You'll be prompted to uninstall the older version and replace with the new version.
- All Ocularis components, however, will need to be upgraded to 2.0.2. These include: Ocularis Base, *Ocularis Administrator* and all instances of *Ocularis Client*.
- Ocularis Base should be upgraded first. After that, the order in which you upgrade each component from an installation standpoint does not matter.
- The installation procedure will examine the system for an existing instance of each Ocularis component and if it finds it, the software will prompt you to uninstall the corresponding component during the installation process.
- To upgrade, simply follow the installation instructions that follow. Differences will be noted where applicable for upgrade installations.

Upgrading Recorders

It is not necessarily required to upgrade existing recording component software:

- If you currently have NetDVMS 6.5g and are upgrading to Ocularis CS 2.0.2, you may continue to use NetDVMS 6.5g with Ocularis CS. Your NetDVMS SLC will be locked, however, and you will not be able to add new cameras to NetDVMS. The number of NetDVMS camera licenses will be deducted from the Ocularis CS RC-C recorder count.

We strongly recommend upgrading to the RC-C recording component. This upgrade, however, may be done at a later time.

You must, however, upgrade the event proxy used. See *To Update the RC-C / RC-I Event Proxy* on page 34.

- If you currently have NetEVS 3.1b or earlier, when you upgrade to Ocularis ES 2.0.2, you must upgrade to the RC-E 4.x recording component.
- If you currently have RC-E 4.0, you need not upgrade the recorder but **you must, upgrade the event proxy used. See *To Update the RC-E Event Proxy* on page 37.**
- If you are upgrading a NetDVR environment and have obtained Ocularis IS, you MUST upgrade NetDVR to the RC-I recorder. Remember that you may request multiple RC-I recorder SLCs depending on the number of cameras on the system. These additional SLCs are available upon request and at no charge.

You must, however, upgrade the event proxy used. See *To Update the RC-C / RC-I Event Proxy* on page 34.

- If you upgrading a ProSight-SMB environment and have obtained Ocularis PS, you MUST upgrade ProSight-SMB to the RC-P recorder. Remember that you may request multiple RC-P recorder SLCs depending on the number of cameras on the system. These additional SLCs are available upon request and at no charge.



New Ocularis SLCs ARE REQUIRED when upgrading from Ocularis version 1.x and prior (for demo, trial and retail).

Be sure to have your new SLC in hand prior to the start of any software installation.

See the *Release Notes for Ocularis v2.0.2* for known issues, feature changes and fixes.

Ocularis Installation & Configuration

Items to consider prior to installation:

- Once all components are installed, synchronize the date and time between the server and workstation pcs.

Note: *The time and date tolerance for all PCs using Ocularis is a maximum of five (5) minutes. If the time is off by more than 5 minutes between the Ocularis Base machine and Ocularis Client workstations, log in attempts will fail.*

- The Ocularis Base component should be installed or upgraded first. After that, the order of installing or upgrading each component does not matter.
- You must either be logged in as the Windows account 'Administrator' when licensing Ocularis Base or be a user with administrative privileges and select 'Run as Administrator' when launching the licensing application.
- Depending on your current Windows configuration, you may be asked to insert your original Windows installation CD in order to install additional Windows components.
- You will need to have your Ocularis Software License Code (SLC) on hand when you license the application.

The following components are outlined in this document:

- [Download the Ocularis Installation File](#)
- [Extract the Ocularis Installation Files](#)
- [Installing Ocularis Base](#)
- [Licensing Ocularis Base](#)
- [Installing Ocularis Components](#)
- [Installing Ocularis Administrator](#)
- [Installing Ocularis Client](#)
- [Ocularis Recording Components](#)
- [Ocularis Event Proxies](#)

Download the Ocularis Installation Files

If necessary, Ocularis software may be obtained from the OnSSI website. Follow these instructions to download the installation file.

1. Open a browser and go to the *Ocularis Downloads and Resources* page at:
http://www.onssi.com/ocularis_resources.
2. Review the SLC requirements and other instructions on the page.
3. Click the link for the Ocularis feature set you wish to download (e.g. **Ocularis CS v2.0.2 Download**)
4. A short web form appears. Fill out the form and click **Submit**.

You will receive an email containing the link to the download file as well as other documentation.

5. Click the link to download the Ocularis 2.02 file.
6. You will be prompted to save the file. Select the desired file location and click **Save**.

The file download may take several minutes depending on your connection speed. Be sure to remember the path to the directory where the file was saved.

Extract Ocularis Installation Files

These steps outline the extraction of the Ocularis installation files and may be used for all Ocularis feature sets.

1. Locate the Ocularis installation file. This file may have been downloaded from the OnSSI website or obtained through other means. The file will have one of the following formats depending on the feature set:

Ocularis Feature Set	Filename
Ocularis PS	Ocularis_PS.exe
Ocularis IS	Ocularis_IS.exe
Ocularis CS	Ocularis_CS.exe
Ocularis ES	Ocularis_ES.exe

WARNING: THIS PROCESS SHOULD BE PERFORMED ON THE SYSTEM WHERE OCULARIS BASE EXISTS (IF AN UPGRADE) OR WHERE IT WILL BE INSTALLED (NEW).

2. If it is not already there, copy the installation file from step 1 above to the Ocularis Base machine.
3. Double-click the file from step 1 above to launch and begin the file extraction.

You'll see messages regarding the installation validation which may take several minutes.

The following sample screens are shown for Ocularis CS but corresponding screens are displayed for the other Ocularis feature sets.

The *Welcome to the Ocularis Installer Extraction Wizard* screen appears.



Figure 1 Ocularis Installer Extraction Wizard

4. Click **Next**.

On the *Destination Folder* screen, you may modify the path for the installation files to be placed.

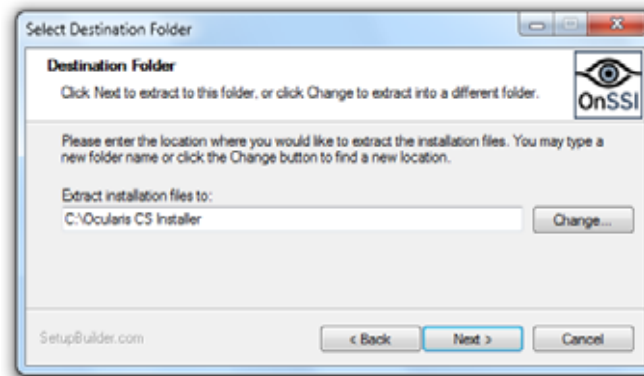


Figure 2 Select Destination Folder

Click **Next**.

5. The *Ready to Extract* screen summarizes file extraction location and size. Click **Back** to make changes or click **Next** to proceed.

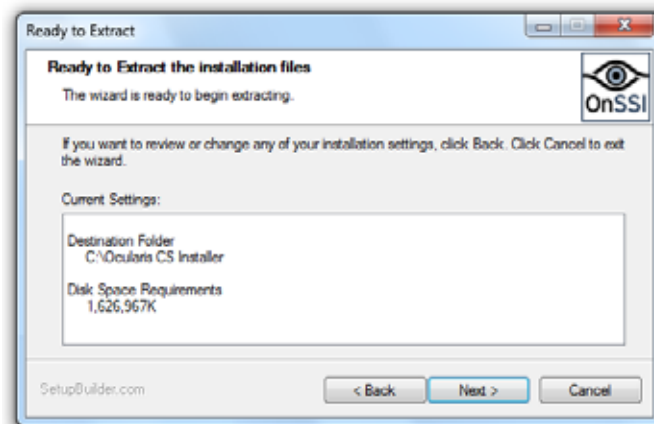


Figure 3 Installation Summary

Files are extracted and copied to the location specified. This may take several minutes.

When all files are extracted, a *Setup Wizard Complete* screen appears. The installation files have been downloaded and unpacked. No applications or components have been installed.

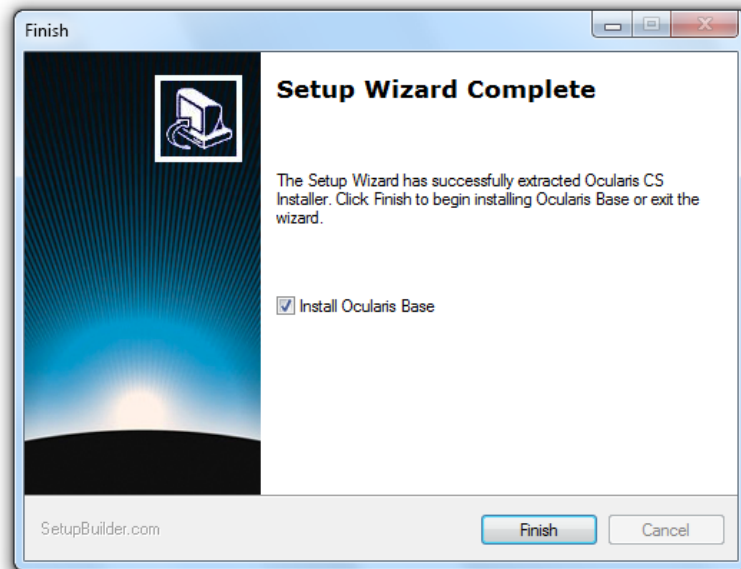


Figure 4 Extraction Setup Wizard Complete

6. If you choose to:
 - a. Install Ocularis Base now: make sure the corresponding checkbox is selected and click **Finish**. Proceed to *Installing Ocularis Base* below.
 - b. If you choose to install Ocularis Base later: uncheck the *Install Ocularis Base* checkbox and click **Finish**. Proceed to *Installing Ocularis Base* below.

You have completed the extraction of the Ocularis installation files.

Installing Ocularis Base

Reminder:

- Anti-Virus software must be disabled during the installation of the Ocularis Base component.
- Follow this procedure when installing a new system or upgrading an existing Ocularis Base component.

TO INSTALL OCULARIS BASE

Use these steps for all feature sets of Ocularis.

WARNING: THIS PROCESS SHOULD BE PERFORMED ON THE SYSTEM WHERE OCULARIS BASE EXISTS (IF AN UPGRADE) OR WHERE IT WILL BE INSTALLED (NEW).

1. To install Ocularis Base after extracting the installer files (from *Extract Ocularis Installation Files* on page 9), go to the directory where the Ocularis xS files were extracted to.

These installation files should be located on the Ocularis Base machine. If they are not, copy them to the Ocularis Base system.

For Ocularis CS, the default location is: **C:\Ocularis CS Installer**. Launch (double-click) the shortcut: **Install Ocularis Base**.

2. If upgrading Ocularis, a message that a previous installation of this software has been detected. Click **Yes** to proceed with the installation.
3. The *Ocularis Base Setup Wizard* screen appears.



Figure 5 Ocularis Base Setup Wizard

Click **Next**.

4. The *License Agreement* appears. Please read, click the "I accept.." radio button and then click **Next**.
5. Select between the *Demo* or *Retail* version of Ocularis Base.

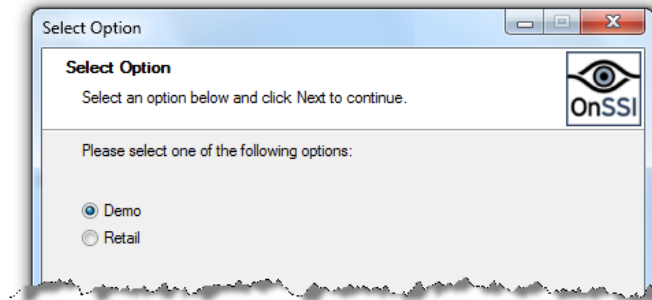


Figure 6 Select Demo or Retail Version

The **Demo** version provides for a limited number of camera licenses and a single license for Video Content Analytics and Remote Ocularis Video Wall. There is also an expiration date associated with this license. Choose this option only if you know you are working with a demo license. This option is applicable only to Ocularis ES and Ocularis CS.

The **Retail** version is only limited by the licenses purchased. This option is available for all feature sets of Ocularis.

Click **Next**.

- On the *SQL Server instance* page, the majority of users will use the default selection.

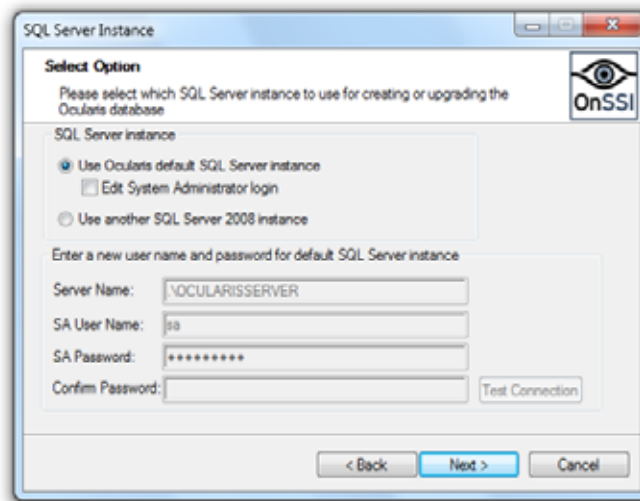


Figure 7 SQL Server Instance

SQL Server Options Defined:

Use Ocularis default SQL Server instance – this default option will:

- In new installations, install SQL Server 2008 Express for use with Ocularis
- For upgrade installations, use the existing SQL Server Express 2008 Ocularis database

Edit System Administrator login - If you wish to modify the administrator login for the SQL Server instance, click the **Edit System Administrator** login checkbox. The corresponding fields will open to allow entry of the required criteria.

Use another SQL Server 2008 instance - If you have an existing SQL Server database that you wish to use, you may select this option. You will be required to enter login credentials for this SQL Server instance. **DO NOT USE THIS OPTION IF YOU ARE UPGRADING UNLESS YOU ARE PREPARED TO MANUALLY IMPORT THE OLD DATABASE TO THE NEW SQL SERVER INSTANCE.**

When ready, click **Next**.

- On the *Select Bookmarks Folder* screen, you have the option to specify the location for the storage of Ocularis Bookmarks. Change the default location if necessary. When ready, click **Next**.

10. On the *Select Destination Folder* for Ocularis Base you may modify the directory path for the Ocularis Base files. We recommend using the default but you may modify the path here. Click **Next**.
11. The next screen summarizes the installation folders and size. Click **Back** to make changes or click **Next**.

The Ocularis Base files are installed to the specified directory and may take several minutes. A new installer website is also created.

When installation is completed, the *Setup Wizard Complete* for Ocularis Base screen appears.

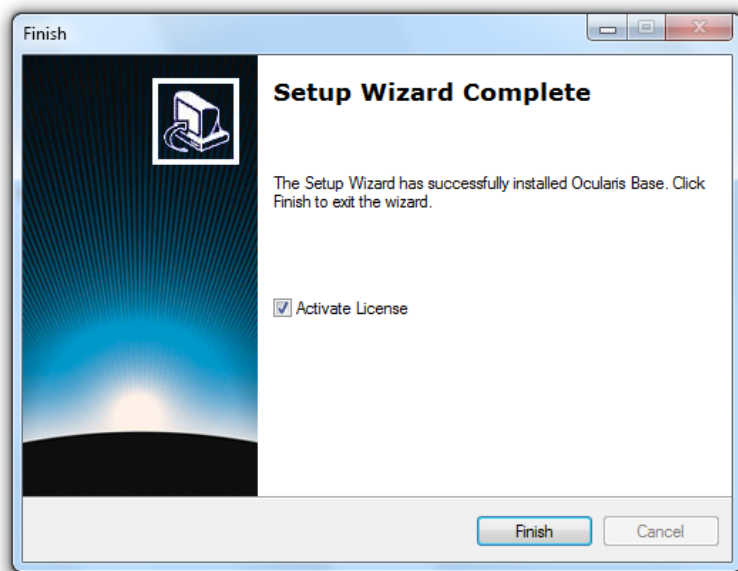


Figure 8 Ocularis Base Setup Wizard Complete

12. You are given the option to activate the Ocularis license upon completion of the wizard. It is recommended (but not mandatory) to do this at this time. Ocularis must be licensed before use.

- a. If you choose to license Ocularis now, verify that the *Activate License* checkbox is checked and click **Finish**.

The *Ocularis License Activation* application is automatically launched. Proceed to *Licensing Ocularis Base* below.

- b. If you choose to activate the Ocularis license later, uncheck the *Activate License* checkbox and click **Finish**.

When you are ready to license Ocularis, launch the *Ocularis License Activation* application from the desktop icon. Proceed to *Licensing Ocularis Base* below.

The installation of Ocularis Base will create the following icon on the desktop:



Licensing Ocularis Base

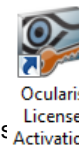
Once the Ocularis Base component is installed, an additional licensing step may be required.

- All new installations require the Ocularis Base to be licensed.
- When upgrading from an Ocularis version 1.x and prior, INSTALLATIONS REQUIRE A NEW SLC. This applies to Demo, Retail and Trial versions.
 - For upgrades (Demo, Retail or Trial), you may download the software but DO NOT start the upgrade installation unless and until you have your new 2.0.2 SLC in hand and proceed with the licensing steps below.
- When upgrading from an Ocularis version 2.0 or 2.0.1, INSTALLATIONS DO NOT REQUIRE A NEW SLC. This applies to Demo, Retail and Trial versions. Simply install the new software over the existing software.
 - For **Demo** versions: you need to verify the SLC. Launch the *Ocularis License Activation* application and skip to step 4 below. The SLC should already be pre-populated in the *Verify SLC* field.
 - For **Retail** and **Trial** versions: The licensing step may be skipped. However, if additional camera licenses were added or other changes made, you will receive a new .v2c file and will need to update your Base license. Launch the *Ocularis License Activation* application and skip to step 13 below.

TO LICENSE OCULARIS BASE

This procedure may be used for: Demo, Retail, new, or upgrade versions of all Ocularis feature sets.

1. The *Ocularis License Activation* application must be launched. This is done in one of two ways:
 - At the end of installing or upgrading Ocularis Base, you are given the option to activate the Ocularis license. This will automatically launch the *Ocularis License Activation* application if the Activate license checkbox is selected on the last screen of the installation wizard. (see Figure 8).
 - On the system where the Ocularis Base component is installed, locate the following icon on the desktop:



2. If you are logged in under the Windows 'Administrator' account, double-click this icon to launch the *Ocularis License Activation* application. If you are logged in under another account with administrative rights, right-click the icon and select 'Run as Administrator'.

The image shown in Figure 9 is displayed.

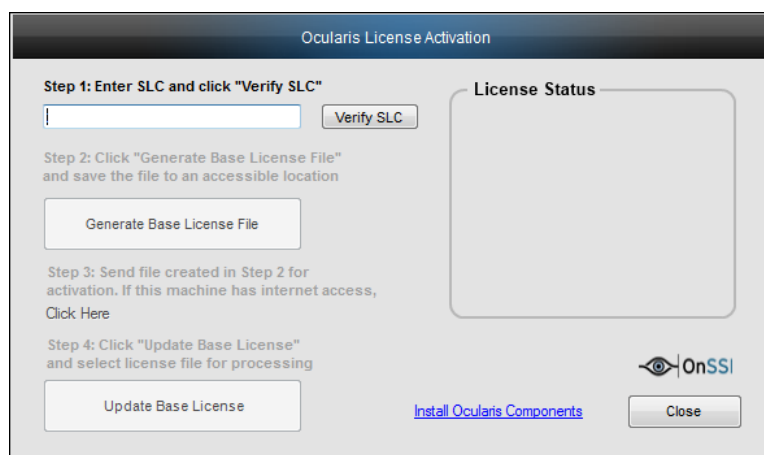


Figure 9 Ocularis License Activation on a fresh system

On upgrade installations, the *License Status* area may identify that you need to obtain a new SLC.

3. Enter the Ocularis Base SLC in the field provided in 'Step 1: Enter SLC and click "Verify SLC"'. In upgrade installations, the SLC may already appear in this field.

4. Click **Verify SLC**.

The *Licensing Status* area will update to reflect the licensing defined by the SLC.

5. If the Ocularis Base installation is:

- For a *Demo* version: The activation is complete. The software is licensed for the number of days and number of licenses shown. Click **Close**. You may proceed with the installation of Ocularis components. (see *Installing Ocularis Components* on page 18.)
- For a *Retail* or *Trial* version and:
 - a.) This is a new installation:
 - a few more steps are required. Continue to step 6 below.
 - b.) This is an upgrade from Ocularis version 1.x:
 - a few more steps are required. Continue to step 6 below.
 - c.) This is an upgrade from Ocularis version 2.0/2.0.1:
 - The activation is complete. The software is licensed for the quantities shown in the License Status area. Click **Close**. You may proceed with the installation of Ocularis components. (see *Installing Ocularis Components* on page 18.)

6. A file needs to be generated by the licensing application on the Ocularis Base machine based on the SLC entered.

Refer to Figure 9 and locate onscreen instructions: “Step 2: Click “Generate Base License File...” and click the **Generate Base License File** button.

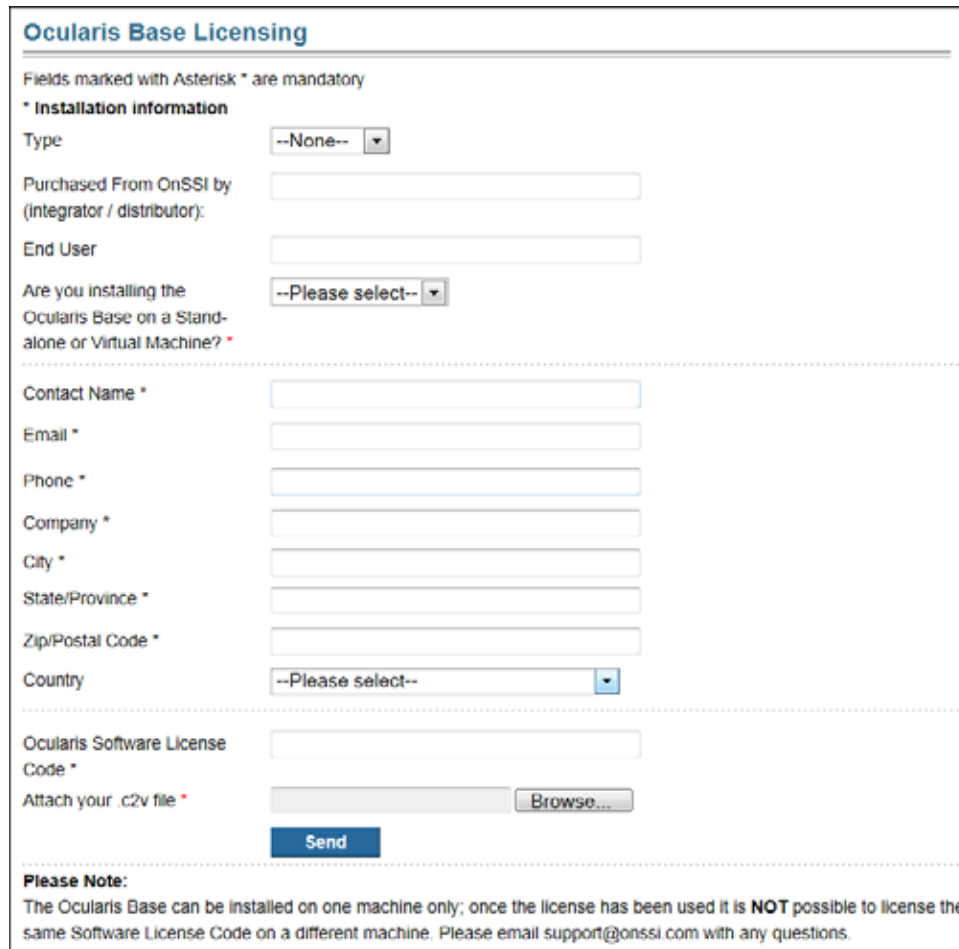
**Warning:**

This step may only be done once. It is important to be sure that the machine used to license Ocularis Base be the final unit in which the software will reside.

7. A Windows save dialog box appears, prompting for a file location. Specify an easily accessible location to store the **.c2v** file that is generated.
8. Refer to onscreen instructions: “Step 3: Send file created in Step 2 for activation...”
 - a.) if you have access to the internet from the Ocularis Base machine, click the ‘Click Here’ link provided on the screen as shown in Figure 9. This will launch a browser and navigate to the *Ocularis Base Licensing Page*.
 - b.) If you do not have access to the internet from this machine:
 - i) bring the **.c2v** file generated above to another workstation that does have internet connectivity
 - ii) open a browser and type the following URL:

<http://www.onssi.com/sendc2v>

The following screen appears in the browser:



Ocularis Base Licensing

Fields marked with Asterisk * are mandatory

*** Installation information**

Type

Purchased From OnSSI by (integrator / distributor):

End User

Are you installing the Ocularis Base on a Stand-alone or Virtual Machine? *

Contact Name *

Email *

Phone *

Company *

City *

State/Province *

Zip/Postal Code *

Country

Ocularis Software License Code *

Attach your .c2v file *

Please Note:
The Ocularis Base can be installed on one machine only; once the license has been used it is **NOT** possible to license the same Software License Code on a different machine. Please email support@onssi.com with any questions.

Figure 10 Ocularis Base Licensing Web Page

9. Fill out the form and remember to attach the .c2v Base License File that was generated in the prior step.
10. When finished, click the **Send** button.

OnSSI will process the file based on your purchased license and email to you a new file with a **.v2c** extension. The turn around time is approximately one hour during normal business hours.¹

11. Detach the **.v2c** file provided by OnSSI to a location easily accessible to the machine with Ocularis Base installed.
12. Launch the *Ocularis License Activation* application on the Ocularis Base machine if it is not already open.
(If you are logged in under the Windows 'Administrator' account, double-click the desktop icon to launch the *Ocularis License Activation* application. If you are logged in under another account with administrative rights, right-click the icon and select 'Run as Administrator')
13. Click the **Update Base License** button as shown in Figure 9.
14. Locate and select the **.v2c** file.
15. Click **Open**.

The Licensing Info area of the Ocularis License Activation screen will update to reflect installed licenses as well as your SLC. The software is ready for use.

16. Click **Close** to close the *Ocularis License Activation* application.

¹ Support hours for licensing are 8:00 a.m. to 5:00 p.m. U.S. Eastern time.

Installing Ocularis Components

Certain components of Ocularis, namely: *Ocularis Client*, *Ocularis Administrator* and Ocularis Recorders, are downloaded and installed from a central webpage located on the Ocularis Base machine. This makes installation easy as system administrators no longer need to obtain separate installation files and move them from computer to computer. Since computers running Ocularis components need to have network connectivity to the Ocularis Base system anyway, the installation files for Ocularis components may be accessed from the Base machine.

A local webpage must be launched in order to download Ocularis components.

Ocularis Component Location

Ocularis components may be installed in various locations on a network. The configuration chosen depends on many factors including (but not limited to): the number of cameras licensed, the recording component used and the availability of computer hardware for the system.

Basic System

In most cases, a single server system (also called “Basic System”) will suffice. In a Basic System layout, a central server is used as the primary location for the following components:

- Ocularis Base
- Recording Component
- and perhaps even the *Ocularis Administrator* (depending on the graphics card)

The ‘Basic System’ is a good system to start with when first implementing Ocularis, especially on smaller systems (those with less than 30 cameras). In an Ocularis PS environment, it is even acceptable to run the components on a Windows 7 PC, rather than a server class machine, provided the camera count is low. Networked workstations will have the *Ocularis Client* installed on them. You may install the *Ocularis Client* component on an unlimited number of workstations.

As the system grows and cameras are added or upgraded, the capacity of the recording component will be reached. The process would be to then simply add an additional server on the network to house an additional instance of the recording component and install the new cameras on the new recorder. With Ocularis, the location of the camera is seamless to the operator.

The Basic System, however, is not supported when using Ocularis ES.

Distributed System

In cases where the systems are larger or with Ocularis ES, a multiple server system (also called “Distributed System”) is used. In a Distributed System, separate dedicated servers are used with single components installed on each. The Ocularis Base may reside on one server (with or without a recording component), recording components each on their own servers, and the *Ocularis Administrator* and *Ocularis Client* on one or more networked workstations.

Which system is best for me?

It is important to determine the general layout of where you want components to be installed on new Ocularis installations. In general, it is safe for most users to select the Basic System and grow into the Distributed System. If you have hundreds of cameras (or more) or you use Ocularis ES, use the Distributed System as a model. Otherwise, most installations will be fine with the Basic System layout.

There is no set formula to determine the layout for each installation, as each organization is unique. The system layouts described here are simply for use as a general guideline.

To ACCESS THE OCULARIS COMPONENT INSTALLATION PAGE

Note: Be sure to turn off any Firewalls running on the Ocularis Base machine.

1. Determine the layout of the Ocularis system and go to the machine where you want to install the component.
2. Access the download webpage through a browser using the following URL:

`http://[NAME]/OcularisService/InstallerWebsite/index.html`

where **[NAME]** is either the IP Address or computer name of the Ocularis Base machine.

The following web page appears:

OnSSI Install Ocularis Components

Ocularis Component Installation

The installation of Ocularis is divided into four components; These components include:

1. Ocularis Base (which should already be installed if you are viewing this page)
2. Ocularis Recording Component
3. Ocularis Administrator
4. Ocularis Client

Select the architecture below that most fits your requirements.
Most users for new installations** will use the Basic System layout.

Basic System

If you wish to install Ocularis on a single machine or in a small environment, use the Basic System configuration.

Multiple instances of Ocularis Administrator and an unlimited number of Ocularis Clients are supported in this design.

Distributed System

If you need to include multiple recorders on your system (either initially or later as the system grows), use the Distributed System configuration.

Multiple instances of Ocularis Administrator and an unlimited number of Ocularis Clients are supported in this design.

Note: the number of recorders differentiates between the two system layouts.

[Click here to download the Installation Guide](#)

**For Ocularis P5, Ocularis I2 and Ocularis C2.

Figure 11 Install Ocularis Components Web Page

2. Select the system layout (Basic or Distributed) you intend to follow.

For Basic Systems:

3. Click on 'Basic System'. This option should be used by most Ocularis PS, IS and CS installations. (Use the 'Distributed System' diagram for Ocularis ES.)



Figure 12 Basic Installation Web Page

The 'Basic Installation' page provides a sample layout that may be followed to assist with determining where Ocularis components should be installed. When you move the mouse over a component, a balloon assistant pops up.



Figure 13 Balloon assistant for Ocularis Client

The balloon assistant provides direction on where we recommend installing the component. There are three options displayed:

- Click [here](#) to review hardware specifications for this component
 - Click [here](#) to download the component
 - Click [here](#) to view the user manual.
4. Select the component you wish to download and install.
 5. Select the 'Click here to download component' link when you are ready to download the corresponding component to the local machine.
 6. Follow the on-screen prompts.
 7. You will be asked whether the component is an **Upgrade** or **New** installation.
 - Choose **Upgrade** if you have an existing version of the component
 - Choose **New** if you do not have the component installed on the local machine

Note for upgrading the recording component event proxy:

If you are upgrading from Ocularis 2.0/2.01, you need not upgrade the recording component but you must upgrade its event proxy. This is only applicable on Ocularis IS, Ocularis CS, and Ocularis ES.

To install only the recording component event proxy, select the recording component to download and choose the **Upgrade** option. This will download and install only the corresponding event proxy.

8. You will be asked whether to run or save the installation file for the component. You may save the file locally and run it later or simply run it now.
9. The installation for each component will continue. See the instructions below specific to each component.

For Distributed Systems:

The Distributed model may be used for any installation of Ocularis but should be used for Ocularis ES. The download procedure is the same as the Basic System above.

Installing Ocularis Administrator

- Refer to the system requirements defined on the OnSSI website for hardware specifications.
- The *Ocularis Administrator* must have network connectivity to the machine where the Ocularis Base software is installed.
- Prior to using *Ocularis Administrator* on a new system, you must license your copy of Ocularis Base. See [Licensing Ocularis Base](#) on page 15 for more details.
- Follow this procedure when installing a new system or upgrading an older version of *Ocularis Administrator*.

TO INSTALL OCULARIS ADMINISTRATOR

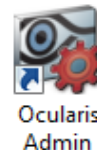
These instructions assume that you have installed Ocularis Base and are located at the system on which you wish to install *Ocularis Administrator*. Use these steps for all feature sets of Ocularis.

7. From the 'Install Ocularis Components' web page, select either the 'Basic System' model or 'Distributed System'. (see Figure 11).
8. From the Basic or Distributed Installation webpage, click either:
 - the *Ocularis Administrator* component DVD symbol at the bottom of the screen
 - the 'Click here to download component' link within the corresponding pop-up assistant.
9. When you are asked if you want to continue, click **Yes**.
10. Click **Upgrade** or **New** depending on whether *Ocularis Administrator* exists on the local pc.
11. When you are prompted to run or save the file, you may choose to either run it now or save it and run the installation later.
12. Once **Run** has been selected, the *Welcome to Ocularis Admin Setup Wizard* appears. Click **Next**.
13. The *License Agreement* appears. Please read, click the "I accept.." radio button, and then click **Next**.
14. If a previous version of the *Ocularis Administrator* is detected, a notice will appear asking for your confirmation to uninstall the older version and install the new version. Click **Yes**.
 - a. An "Are you sure you want to remove Ocularis Admin...?" screen appears. Click **Yes**.
 - b. When the uninstall is complete, click **OK**.
15. The *Select Destination Folder* screen appears.

You may leave the default directory path as is or change it if necessary according to your organization. If installing the **Demo** version, keeping the default path is recommended.
Click **Next**.
16. The next screen, *Ready to Install the Program*, will confirm the file path and disk space requirements. Click **Next** if OK. Click **Back** to make changes to the directory path or the folder.

The *Ocularis Administrator* software is installed.
17. When completed, the *Setup Wizard Complete for Ocularis Administrator* screen appears.
18. Click **Finish**.

The installation of *Ocularis Administrator* will create the following icon on the desktop:



Installing Ocularis Client

- The *Ocularis Client* may be installed on as many systems as desired.
- Refer to the system requirements defined on the OnSSI website for hardware specifications.
- Follow this procedure when installing a new system or upgrading existing copies of *Ocularis Client*.

To INSTALL OCULARIS CLIENT

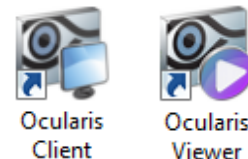
These instructions assume that you have installed Ocularis Base and are located at the system on which you wish to install *Ocularis Client*. Use these steps for all feature sets of Ocularis.

1. From the 'Install Ocularis Components' web page, select either the 'Basic System' model or 'Distributed System'. (see Figure 11).
2. From the Basic or Distributed Installation webpage, click either:
 - the *Ocularis Client* component DVD symbol at the bottom of the screen
 - the 'Click here to download component' link within the corresponding pop-up assistant.
3. When you are asked if you want to continue, click **Yes**.
4. Click **Upgrade** or **New** depending on whether *Ocularis Client* exists on the local pc.
5. When you are prompted to run or save the file, you may choose to either run it now or save it and run the installation later.
6. Once **Run** has been selected, if a previous version of the *Ocularis Client* is detected, a notice will appear asking for your confirmation to uninstall the older version and install the new version. Click **Yes**.
 - a. An "Are you sure you want to remove Ocularis Client...?" screen appears. Click **Yes**.
 - b. When the uninstall is complete, click **OK**.
7. The *Welcome to Ocularis Client Setup Wizard* appears. Click **Next**.
8. The *License Agreement* appears. Please read, click the "I accept.." radio button and then click **Next**.
9. The *Select Destination Folder* screen appears.

You may leave the default directory path as is or change it if necessary according to your organization. If installing the **Demo** version, keeping the default path is recommended. Click **Next**.
10. The *Select Option* screen appears. Select the desired language for *Ocularis Client* from the drop-down menu. The language may be changed again after the software has been installed. Click **Next**.
11. The next screen, *Ready to Install the Program*, will confirm the file path and disk space requirements. Click **Next** if OK. Click **Back** to make changes to the directory path or the folder.

The *Ocularis Client* software is installed.
12. When the *Ocularis Client* Setup is completed, the *Setup Wizard Complete for Ocularis Client* screen appears. Click **Finish**.

The software installation will result in the display of the following desktop icons:



Ocularis Recording Components

The Ocularis Feature set file downloaded from our website (see *Download the Ocularis Installation Files* on page 8) determines the recorder packaged with the installation. For instance, if you downloaded the Ocularis CS Feature Set (Ocularis_CS.exe), the name of the recorder included is RC-C.

Ocularis Recorders must be installed for new installations. For upgrade installations, reinstallation of the recorder varies. For Ocularis v2.0.2, in most cases, it is NOT necessary to update the recorders. It IS necessary, however, to upgrade the corresponding event proxies for the recorders (Ocularis PS is excluded). See *Upgrading Recorders* on page 6 to determine whether you need to upgrade your recorder.

Ocularis PS, Ocularis IS, and Ocularis CS

TO INSTALL A RECORDING COMPONENT (FOR OCULARIS PS, OCULARIS IS AND OCULARIS CS)

These instructions assume that you have installed Ocularis Base and are located at the system on which you wish to install the RC-P, RC-I or RC-C recorder. References to the event proxy should be ignored with Ocularis PS. The examples listed are for Ocularis CS.

13. From the 'Install Ocularis Components' web page, select either the 'Basic System' model or 'Distributed System'. (see Figure 11).
14. From the Basic or Distributed Installation webpage, click either:
 - o the Recording Component DVD symbol at the bottom of the screen
 - o the 'Click here to download component' link within the corresponding pop-up assistant.
15. When you are asked if you want to continue, click **Yes**.
16. Click **New** to install the recorder.
17. When you are prompted to run or save the file, you may choose to either run it now or save it and run the installation later.
18. Once **Run** has been selected, a *Select Destination Folder* screen appears.

This destination will contain the recording component's installation files. You may leave the default directory path as is or change it if necessary according to your organization.

If installing the **Demo** version, keeping the default path is recommended.

Click **Next**.

19. Files are unpacked and downloaded to the specified directory. The *Extraction Complete* screen appears.

You have the option to install the recording component and corresponding event proxy (if applicable) now or at a later time.

- a. If you choose to install these components now (recommended), verify that the corresponding checkboxes are checked and click **Finish**.
Proceed to step 20 below.
- b. If you choose to install the recorder (and its event proxy) later, deselect the checkboxes and click **Finish**. These installations may be triggered manually by launching their corresponding executable file in the directory specified in step 18 above. For example: with Ocularis CS, if the default destination folder was used, the location of the files are:

C:\OnSSI RC-C Installer\Software

The recorder file is: **RC-C_7.0d_Installer.exe**

The event proxy file is: **RC-C RC-I Event Proxy.exe**

20. Once the recorder installation file is launched (either from the extraction wizard in step 19 above or from manually launching the executable file), the installation will begin for its corresponding event proxy (if applicable). The recorder installation will follow.

The system will check for an existing instance of the event proxy on the local machine. If one is detected, a notice will appear asking for your confirmation to uninstall the older version and install the new version. Click **Yes**.

- a. An “*Are you sure you want to remove ...?*” screen appears. Click **Yes**.
 - b. When the uninstall is complete, click **OK**.
21. A *Welcome to the RC-C RC-I Event Proxy Setup Wizard* appears. Click **Next**.
22. The *Select Destination Folder* screen appears.

This folder will contain the files for the event proxy. You may leave the default directory path as is or change it if necessary according to your organization. If installing the **Demo** version, keeping the default path is recommended.
Click **Next**.
23. The next screen, *Ready to Install the Program*, will confirm the file path and disk space requirements. Click **Next** if OK. Click **Back** to make changes to the directory path or the folder.

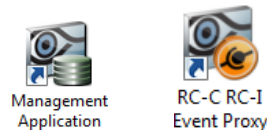
The event proxy software is installed.
24. When completed, the *Setup Wizard Complete* screen appears. Click **Finish**.
25. A *Welcome to the RC-C Installer Setup Wizard* appears. Click **Next**.
26. A *Welcome to the RC-C Recorder 7.0d Setup Wizard* appears. Click **Next**.
27. A *License Agreement* appears. Please read, click the “I accept..” checkbox and then click **Next**.
28. You are given the option to choose a **Typical** or **Custom** installation. Most installations use typical. Click **Typical**.
29. On the *Recorder Setup* screen, you have the option to install the 30 trial version or the licensed version. If you elect to install the licensed version now, you must provide the software license code. You may install the 30 day trial version now and insert the SLC after the software installation is complete. Make your selection and click **Next**.
30. On the *Ready to Install* screen, click **Install**

The recorder is installed. This may take several minutes.
31. When done, a *Completed the RC-C Recorder Setup Wizard* screen appears. Click **Finish**.

Additional files including a Video Device Driver pack will be installed. This may take several minutes.
32. A *Setup Wizard Complete* screen appears. Click **Finish**.

The recording component is installed.

The installation of the recorder and event proxy will create the following icons on the desktop:



Ocularis ES

TO INSTALL THE OCULARIS ES RECORDING COMPONENT

The architecture for Ocularis ES varies significantly from the other Ocularis feature sets. Common components for all Ocularis feature sets include the Ocularis Base, *Ocularis Administrator* and *Ocularis Client*. In addition to these, the Ocularis ES recording component contains a number of other components:

Ocularis ES Recording Component	Description
Management Server (aka RC-E Server)	Typically installed on a dedicated server, this service manages the recorder's configuration in a relational database. The database (SQL Server) may reside on the same or another PC on the network. Accessible via the <i>RC-E Manager</i> application, this is the component used to manage the RC-E recorders.
RC-E Manager (aka Management Client)	The <i>RC-E Manager</i> application is used to manage the day to day configuration of the Management Server and camera configurations.
SQL Server	This is the relational database used by the Management Server. It can reside on the same or different PC as the Management Server.
Recorder (RC-E Recording Server)	Typically installed on a dedicated server, this service manages the recording of video and communication with devices including cameras. There will likely be multiple recording servers in an enterprise environment.
Download Manager	The <i>Download Manager</i> is used to configure what is available on the download webpage. RC-E components are also installed via a local webpage, similar to the Ocularis Component Installation web page.
Failover Server	A failover server is a spare recording server which can take over in case a regular recording server becomes unavailable. A failover server is therefore always installed on a separate computer. There may be multiple failover servers.

More details on the Ocularis ES architecture and system layout are discussed in OnSSI's *Ocularis Basic Certification Training* ("Boot Camp") course, which is required if you are working with Ocularis ES. Training course schedules and details may be found at: www.onssi.com/certification-training.html.

TO INSTALL THE MANAGEMENT SERVER (RC-E SERVER)

The following steps assume you have determined the layout/architecture of your Ocularis ES environment. Follow these steps after you've completed the installation of Ocularis Base, Ocularis Administrator and Ocularis Client.

1. On the machine you wish to install the Management Server (RC-E Server), open a browser and enter the following URL:

`http:// [NAME] /OcularisService/InstallerWebsite/sysadmin.html`

where **[NAME]** is either the IP Address or computer name of the Ocularis Base machine.

2. The webpage displayed is a simple list of links to Ocularis ES components. Click the link for [RC-E Event Proxy and Recorder bundle](#).
3. You are prompted to run or save the file. You may save the file locally and then run it or simply run it now.
4. When the file is run, a *Select Destination Folder* screen appears.
This destination is for the RC-E Installer files. You may leave the default directory path as is or change it if necessary according to your organization. If installing the **Demo** version, keeping the default path is recommended.
Click **Next**.
5. The *Extraction Complete* screen appears.

You have the option to install the recording component and corresponding event proxy (if applicable) now or at a later time.

- a. If you choose to install these components now (recommended), verify that the corresponding checkboxes are checked and click **Finish**.

Proceed to step 6 below.

- b. If you choose to install the recorder (and its event proxy) later, uncheck checkboxes and click **Finish**. These installations may be triggered manually by launching their corresponding executable file in the directory specified in step 18 above. For example: with Ocularis CS, if the default destination folder was used, the location of the files are:

C:\OnSSI RC-E Installer\Software

The recorder file is: **OnSSI-RC-E.exe**

The event proxy file is: **RC-EEvent Proxy.exe**

6. Once the recorder installation file is launched, the event proxy is installed first.

The system will check for an existing instance of the event proxy on the local machine. If one is detected, a notice will appear asking for your confirmation to uninstall the older version and install the new version. Click **Yes**.

- a. An “*Are you sure you want to remove ...?*” screen appears. Click **Yes**.
- b. When the uninstall is complete, click **OK**.

7. A *Welcome to the RC-E Event Proxy Setup Wizard* appears. Click **Next**.

8. A *Select Destination Folder* screen appears.

This folder will contain the files for the event proxy. You may leave the default directory path as is or change it if necessary according to your organization. If installing the **Demo** version, keeping the default path is recommended.

Click **Next**.

9. The next screen, *Ready to Install the Program*, will confirm the file path and disk space requirements. Click **Next** if OK. Click **Back** to make changes to the directory path or the folder.

The event proxy software is installed.

10. When completed, the *Setup Wizard Complete* screen appears. Click **Finish**.

11. Additional files are extracted as the RC-E Server (Management Server) Installation proceeds. This installation will install:

- o IIS
- o The RC-E Server Database
- o The RC-E Server (Management Server)

When you see this screen, click on the component in the order shown. As components are installed, they will become disabled on this menu.

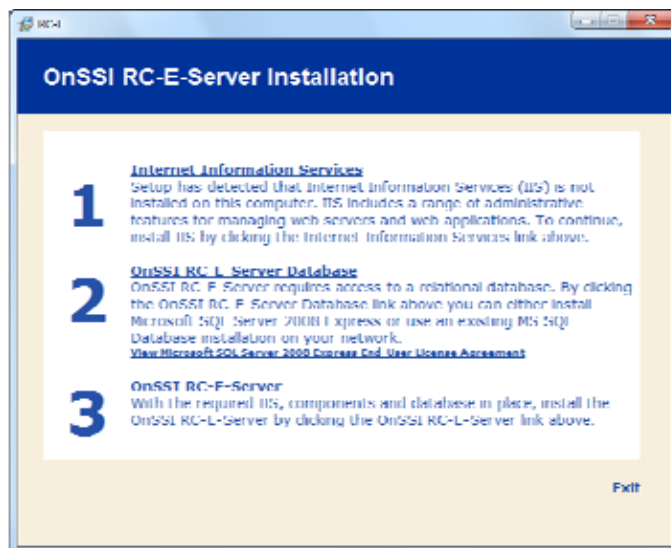


Figure 14 Installing the RC-E Server (Management Server)

Step 1: Internet Information Services (IIS Installation)

- You can use this menu to install IIS (if necessary) or you may install IIS manually. The IIS installation may take several minutes.

Step 2: OnSSI RC-E Server Database Installation

- You will have the option to install a new instance of SQL Server Express 2008 or use an existing installation of a SQL database.

Step 3: OnSSI RC-E Server Installation

- This is the installation of the RC-E Server (Management Server)
- You will need the RC-E license file (.lic file) during this installation.

Once the Management Server (Step 3) is complete, a web browser will launch to display an html page with installation instructions for other RC-E components titled "Recorder Downloads". You may manually access the webpage by typing a URL manually.

TO ACCESS THE RECORDER DOWNLOADS WEB PAGE

Use this procedure to access the Ocularis ES recorder installation page located on the RC-E Server (Management Server) system.

1. Open a browser.
2. Enter the following URL:

`http://[Management Server address]:[port]/installation/admin`

For instance:

`http://192.168.11.244/installation/admin`



Figure 15 Download Manager

This downloads page provides links to download and install:

- **Management Client** – This is the RC-E Manager software used to configure and manage cameras and settings on the RC-E Server (Management Server).
- **Recording Server Installer** – This is the recording component which actually records camera video. There may be more than one RC-E recorder in an Ocularis ES enterprise layout. This option is also used to install a Failover server.
- **Log Server Installer** – This component is used to manage systems logs for the RC-E recorders.
- **Video Device Drivers** – These drivers must be installed on each RC-E recorder. The most up-to-date pack of device drivers can be found on the www.onssi.com website.

TO INSTALL THE RECORDING SERVER (RC-E RECORDER)

The RC-E Recorder, or RC-E Recording Server, typically installed on a separate server, is used for recording video and for communicating with cameras and other devices. There may be more than one recording server in a large Ocularis ES installation.

1. On the machine you wish to install the RC-E Recording server, open a browser.
2. Launch the Recorder Downloads page by typing in the following URL.

```
http://[Management Server address]:[port]/installation/admin
```
3. Under the section *Recording Server Installer*, click the link **English**.
4. You will be asked “Do you want to save this file?” Click **Save File**.
5. Instruct the PC where you would like to save the file.
6. After the file is downloaded, run the executable.
7. If you receive a Security Warning, click **Run**. The *InstallShield Wizard* will start and begin preparations to install.
8. Click **Next** through the wizard. When you see the screen to *Choose Setup Type*, choose **Custom**.
 Choosing **Custom** provides the system administrator who is installing the software more flexibility on the configuration as well as the option to also install a Failover Server.
9. Continue with the wizard. You'll have the option to specify the location of the installation files.
10. When you see the *Choose Recording Server Type* screen, select **Standard Recording Server**.
11. At the *Recording Server Configuration* screen, fill in this screen as follows:

Name	Name of the RC-E Recording Server. This is the name that will appear in the RC-E-Manager GUI. It can be changed later if necessary.
RC-E Server	IP address of the RC-E Server (Management Server)
MediaDB	The name and location of the RC-E Recording Server database..

Click **Next**.

12. At the *Service Log On Setup* screen, use the default value of *Local System*. Click **Next**.
13. At the next screen, *Recording Server Instance Installer*, you'll be asked to provide the number of instances for the Recording Server on this machine. For most installations, keep the default as '1' and click **Next**.
14. At the *Ready to Install the Recording Server* screen, click **Install**.
15. When the wizard complete screen appears, click **Finish**.

RC-E Post-Component Configuration

The RC-E Recorder is hostname driven. This can pose an issue if the surveillance network is not set up or capable of resolving computer hostnames. Therefore, since RC-E relies on hostnames to resolve addresses (rather than IP addresses), a simple edit needs to be done on a configuration file so that Ocularis are able to view video by direct IP address.

Follow the procedure below to complete the Post-Component Configuration.

TO CONFIGURE RC-E FOR IP ADDRESS RESOLUTION

1. Make a backup copy of the **RecorderConfig.xml** file which is located in the directory: **NEED THIS**

Note: the ProgramData folder may be hidden on some machines.

2. Use a text editor to open the **RecorderConfig.xml** file and make the following change:

(Tip: if using Notepad, use CTRL-F to initiate the find feature to locate the text quickly)

Change the section from (see highlights below):

```

<!--
  It is optional to specify a host name / IP. If no host is specified,
  then the recorder will automatically
  resolve a host name that will be used for generating the LiveFeedUri
  that is published to clients.
  Examples of valid host values are:
  127.0.0.11
  ServerName
  www.domain.com
-->
<host />
<port>7563</port>
</webserver>

```

To:

```

<!--
  It is optional to specify a host name / IP. If no host is specified,
  then the recorder will automatically
  resolve a host name that will be used for generating the LiveFeedUri
  that is published to clients.
  Examples of valid host values are:
  127.0.0.11
  ServerName
  www.domain.com
-->
<host>192.168.11.244</host> ← Use the RC-E Recording Server IP Address
<port>7563</port>
</webserver>

```

3. Save the configuration file and restart the **RC-E Server (Management Server)** and **RC-E Recorder**.

TO INSTALL THE RC-E MANAGER (MANAGEMENT CLIENT)

The RC-E Manager (Management Client) is software which allows administrators the ability to configure parameters on the RC-E Management Server. These parameters include: installing and configuring devices, configuring servers, scheduling and setting up rules, controlling user rights and much more. The RC-E Manager software may be installed on any pc with connectivity to the RC-E Management Server.

1. On the machine you wish to install the RC-E Recording server, open a browser.
2. Launch the Recorder Downloads page by typing in following URL.


```
http://[Management Server address]:[port]/installation/admin
```
3. Under the section *Management Client Installer*, click the link **English**.
4. You will be asked "Do you want to save this file?" Click **Save File**.
5. Instruct the PC where you would like to save the file.
6. After the file is downloaded, run the executable.
7. If you receive a Security Warning, click **Run**. The *InstallShield Wizard* will start and prepare for the install.
8. Click **Next** through the wizard. You'll have the option to change the location where the software is installed.
9. When the wizard is complete, click **Finish**.

TO INSTALL THE LOG SERVER

¹ Disregard this IP Address, despite its use in this example. This would not be a valid IP address if components are installed on multiple servers as they are in real world installations.

The Log Server provides the necessary functionality for logging information from the RC-E Recording Component. It typically resides on the same server as the RC-E Server (Management Server) and runs as a service.

1. On the machine you wish to install the RC-E Log server, open a browser.
2. Launch the Recorder Downloads page by typing in the following URL.

`http://[Management Server address]:[port]/installation/admin`

3. Under the section *Log Server Installer*, click the link **English**.
4. If you receive a Security Warning, click **Run**.
5. At the Welcome screen, click **Next**.
6. Select the location to install the files. Click **Next**.
7. Select the SQL database to be used and then click **Next**.
8. Select the web site you want to use and click **Next**.
9. Specify the URL to the RC-E Server (Management Server) and click **Next**.
10. Select a user account under which the Log Server service will run. The user is automatically granted administrator rights in RC-E.

You are able to select either a particular user account (in which case the service will use the specified user account to log in to the computer acting as management server) or *Network Service* (in which case the service will run whenever the computer acting as management server is running).

How to Select the Predefined Account Network Service

The *Network Service* account is selected by default. Click **OK**.

The *Network Service* account must be added as a Windows user on the relevant recording server computers in your surveillance system in order to retrieve status information from these recording servers.

- a.) Click the **This account** radio button.
 - b.) Click the **Browse** button. This will open the *Select User* window.
 - c.) In the *Select User* window, verify that the required domain is specified in the **From this location** field. If not, click the **Locations** button to browse for the required domain.
 - d.) In the **Enter the object names to select** box, type the required user name.

Typing part of a name is usually all that is necessary. Use the *Check Names* feature to verify that the name you have entered is recognized.
 - e.) Click **OK**.
 - f.) Specify the password for the user account in the **Password** field, and confirm the password in the **Confirm password** field. (The password field must not be left blank.)
 - g.) Click **OK**.
11. Click **Install** and then **Finish** when done.

To INSTALL VIDEO DEVICE DRIVERS

You may use the link from the download page to install the package of device drivers that shipped with your version of Ocularis ES. It is always recommended, to check the www.onssi.com website to obtain the most recent driver pack.

To INSTALL A FAILOVER SERVER (OPTIONAL)

A failover server is a spare recording server which can take over in case the primary recording server becomes unavailable. A failover server is always installed on a separate computer. You may set up multiple failover servers to ensure redundancy.

Follow the steps in To Install the Recording Server (RC-E Recorder) on page 29. When you reach step 10, select **Failover Recording Server** as the recording server type. Continue with the installation by following the screen prompts.

Synchronize Time on Servers

It is critical that the time on the Management Server and all Recording Servers be synchronized (by minute and second). If the RC-E servers are not already time synchronized, they must be synchronized manually. The following resources may be helpful in describing time synchronization methods:

For Windows Server 2003: <http://support.microsoft.com/kb/816042/en-us>

For Windows XP: <http://support.microsoft.com/kb/307897/en-us>

Registry Entries for W32Time Service: <http://support.microsoft.com/kb/223184/en-us>

Or search the internet for “time server”, “time service”, “synchronize servers”, etc.

Ocularis Event Proxies

Event Proxies are used to route events and other information from the recording component to the Ocularis Base. Therefore, the feature sets that use event proxies are: *Ocularis ES*, *Ocularis CS* and *Ocularis IS*. Ocularis CS and Ocularis IS share the same event proxy. Ocularis ES has its own.

- [RC-C / RC-I Event Proxy](#)
- [RC-E Event Proxy](#)

RC-C / RC-I Event Proxy

The RC-C / RC-I Event Proxy is used for routing events generated by the RC-C or RC-I recording component to the Ocularis Base Event Coordinator. The RC-C / RC-I Event Proxy must be installed on the same machine as the RC-C or RC-I recorder.

The RC-C / RC-I Event Proxy is automatically installed when the RC-I or RC-C recording component is installed. Therefore, if the recording component is upgraded or installed from scratch, the installation of the event proxy itself is not necessary. Its installation is included with the installation of the recording component.

If, however, the recording component is not updated but you still would like to update the event proxy, follow the instructions below.

For Ocularis v2.0.2, you must update the event proxy to the newest version.

TO UPDATE THE RC-C / RC-I EVENT PROXY

These instructions assume that you have installed Ocularis Base and are located at the system on which you wish to install the RC-C / RC-I Event Proxy.

1. From the 'Install Ocularis Components' web page, select either the 'Basic System' model or 'Distributed System'. (see Figure 11).
2. From the *Basic* or *Distributed* Installation webpage, click either:
 - o the Recording Component DVD symbol at the bottom of the screen
 - o the 'Click here to download component' link within the corresponding pop-up assistant.
3. When you are asked if you want to continue, click **Yes**.
4. Click **Upgrade** to install only the event proxy.
5. When you are prompted to run or save the file, you may choose to either run it now or save it and run the installation later.
6. The previous version of the event proxy should be detected. A notice will appear asking for your confirmation to uninstall the older version and install the new version. Click **Yes**.
 - a. An "Are you sure you want to remove the RC-C / RC-I Event Proxy...?" screen appears. Click **Yes**.
 - b. When the uninstall is complete, click **OK**.
7. The *Welcome to the RC-C RC-I Event Proxy Setup Wizard* appears. Click **Next**.
8. The *Select Destination Folder* screen appears.

You may leave the default directory path or change it if necessary according to your organization. If installing the **Demo** version, keeping the default path is recommended. Click **Next**.
9. The next screen, *Ready to Install the Program*, will confirm the file path and disk space requirements. Click **Next** if OK. Click **Back** to make changes to the directory path or the folder.

The *RC-C / RC-I Event Proxy* software is installed.
10. When the *Event Proxy Setup* is completed, the *Setup Wizard Complete* screen appears. Click **Finish**.

Configuring the RC-C / RC-I Event Proxy

Ocularis CS and Ocularis IS recorder events, set up in each corresponding *Management Application*, are sent to Ocularis Base via the NetCentral port. Configuring the RC-C / RC-I Event Proxy includes configuring NetCentral settings in the corresponding *Management Application* and configuring settings within the RC-C / RC-I Event Proxy screen. Two steps are involved:

- Configure event forwarding in the *Management Application* for RC-C or RC-I
- Configure parameters in the RC-C / RC-I Event Proxy

To CONFIGURE EVENT FORWARDING IN THE MANAGEMENT APPLICATION FOR RC-C OR RC-I

1. On the RC-I or RC-C machine, open the *Management Application*.
2. Expand the *Advanced Configuration* branch.
3. Right-click the *NetCentral* node and select **Properties**.
4. In the *NetCentral settings*, check the **Enable NetCentral connections** checkbox.
5. Fill in the following:

Login name	Enter a valid login name found in the NVR. You may use the <i>admin</i> account if you want.
Password	Enter the password for the login account entered above.
Port	This is the port that will be used to communicate events between the NVR and the RC-C / RC-I Event Proxy. You may keep the default of 1237 in most cases.

Table 1 NetCentral Settings

6. When done, click **OK** to close the *NetCentral Settings* pop-up.
7. **Exit** to the *Management Application*, Save changes and restart services.

TO CONFIGURE PARAMETERS IN THE RC-C / RC-I EVENT PROXY

1. Open the **RC-C / RC-I Event Proxy** from the desktop icon or from the Windows menu:
Start → All Programs → OnSSI → RC-C / RC-I Event Proxy

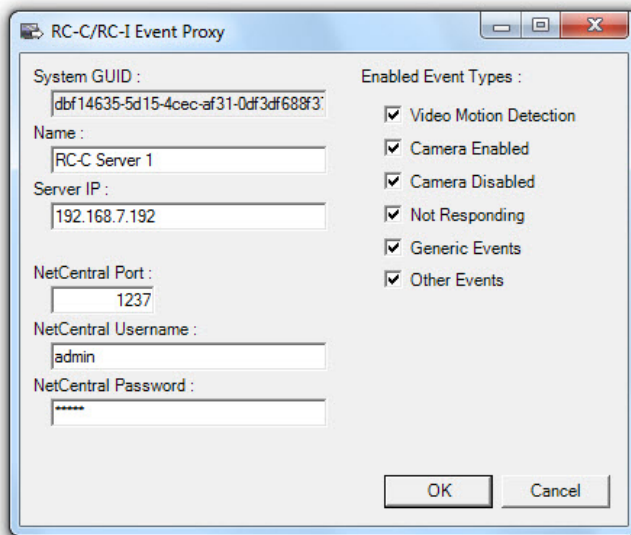


Figure 16 RC-C / RC-I Event Proxy

2. The **System GUID** and **Name** fields are automatically generated. You may modify the Name field as this is what will be displayed in the *Ocularis Administrator* application. This will be listed as the event source so it is common to label it so that it is easy to identify the NVR for which it is routing.
3. Enter the following as configured by the administrator:

Server IP	This is the IP Address of the server that Ocularis Base is installed.
NetCentral Port	This port must match the same port as defined in the NetCentral settings of the NVR's <i>Management Application</i> . In most cases, you will use the default of 1237 .
NetCentral Username	This is the same username defined in the NetCentral settings of the NVR's <i>Management Application</i> .
NetCentral Password	This is the password for the NetCentral Username and should match the one defined in the NetCentral settings of the NVR's <i>Management Application</i> .

Table 2 RC-C / RC-I Event Proxy Settings

4. Click the event type you would like to configure under **Enabled Event Types**. At least one event type must be checked.
5. When done, click **OK**.

Once the RC-C / RC-I Event Proxy is configured, the selected events will appear in the *Ocularis Administrator*. This enables the mapping of cameras to events.

TO RESTART THE RC-C / RC-I EVENT PROXY

1. Open the **RC-C / RC-I Event Proxy** from Windows:
Start → All Programs → OnSSI → RC-C / RC-I Event Proxy
2. Verify the Settings in this screen. When done, click **OK**.

The proxy is restarted and events should now be recognized in Ocularis.

RC-E Event Proxy

The RC-E Event Proxy is used to route events generated by Ocularis ES RC-E Recorders to the OnSSI Event Coordinator via the RC-E Server (Management Server). The RC-E Event Proxy may be installed on any machine with network connectivity to the RC-E Management Server and the Ocularis Base Server. Typically, it is installed on the same machine as the RC-E Server (Management Server).

The RC-E Event Proxy is automatically installed when the RC-E recording component is installed. Therefore, if the recording component is upgraded or installed from scratch, the installation of the event proxy itself is not necessary. Its installation is included with the installation of the recording component.

If, however, the recording component is not updated but you still would like to update the event proxy, follow the instructions below.

For Ocularis v2.0.2, you must update the event proxy to the newest version.

To UPDATE THE RC-E EVENT PROXY

These instructions assume that you have installed Ocularis Base and are located at the system on which you wish to install the RC-E Event Proxy.

1. Access an alternate webpage on the Ocularis Base machine:

```
http:// [NAME] : [port] /OcularisService/InstallerWebsite/sysadmin.html
```

where **[NAME]** is either the IP Address or computer name of the Ocularis Base machine and port is the IIS port number. In most cases, the default port 80 is used and it is not necessary to enter it here.

2. From the webpage, click the link for *RC-E Event Proxy* in the Plugins section.
3. When you are prompted to run or save the file, you may choose to either run it now or save it and run the installation later.
4. The previous version of the event proxy should be detected. A notice will appear asking for your confirmation to uninstall the older version and install the new version. Click **Yes**.
 - a. An “*Are you sure you want to remove the RC-E Event Proxy...?*” screen appears. Click **Yes**.
 - b. When the uninstall is complete, click **OK**.
5. The *Welcome to the RC-E Event Proxy Setup Wizard* appears. Click **Next**.
6. The *Select Destination Folder* screen appears.

You may leave the default directory path or change it if necessary according to your organization. If installing the **Demo** version, keeping the default path is recommended. Click **Next**.
7. The next screen, *Ready to Install the Program*, will confirm the file path and disk space requirements. Click **Next** if OK. Click **Back** to make changes to the directory path or the folder.

The *RC-E Event Proxy* software is installed.
8. When the *Event Proxy Setup* is completed, the *Setup Wizard Complete* screen appears. Click **Finish**.

TO CONFIGURE PARAMETERS IN THE RC-E EVENT PROXY

1. Open the **RC-E Event Proxy** from the desktop icon or from the Windows menu:
Start → All Programs → OnSSI → RC-E Event Proxy

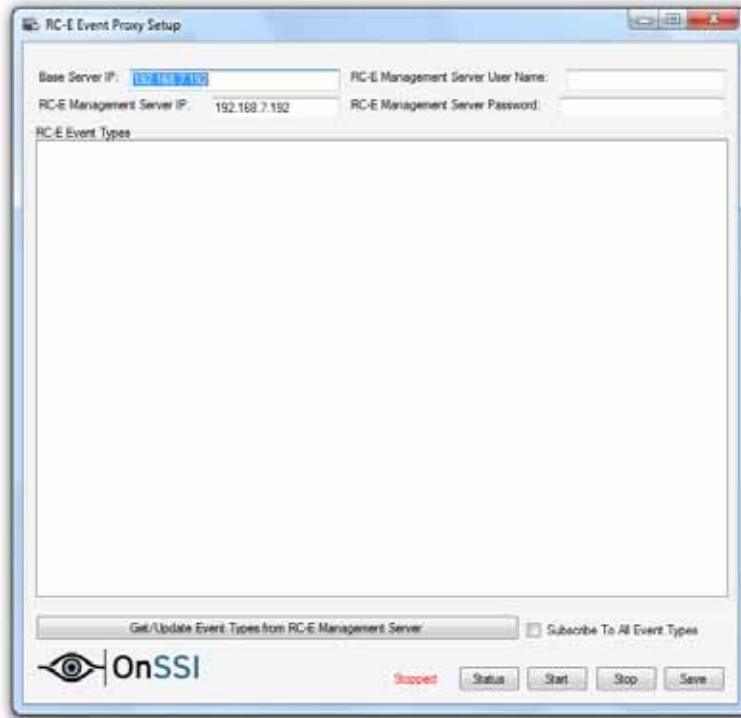


Figure 17 RC-E Event Proxy

2. Configure the settings on the RC-E Event Proxy Setup screen according to the following:

Base Server IP	Enter the IP Address for the server which contains the Ocularis Base component (and thereby the OnSSI Event Coordinator)
RC-E Management Server IP	Enter the IP Address for the server which contains the RC-E Management Server. This is the machine that you log in to with the RC-E Management Client.
RC-E Management Server User Name	Enter a username for an account with full administrative rights to the RC-E Management Server
RC-E Management Server Password	Enter the corresponding password for the account listed above

Table 3 RC-E Event Proxy Settings

3. Once the four data items above are entered, click the **Get/Update Event Types from RC-E Management Server** button. This function will retrieve events from the RC-E Management Server and allow you to select which you wish to monitor in Ocularis.
4. Select the events that you wish to monitor in Ocularis. You may select as many as you like and check **Subscribe To All Event Types** to select the entire list.

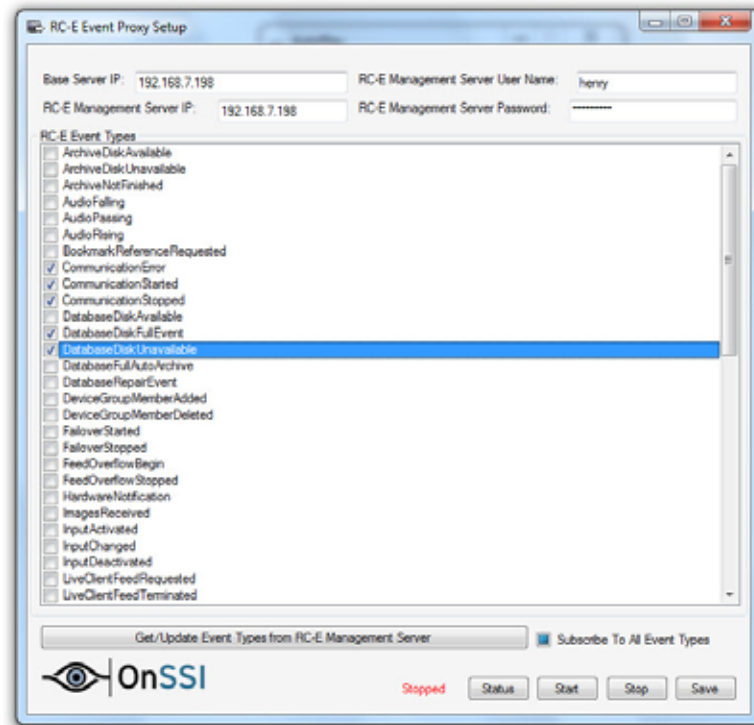


Figure 18 RC-E Event Proxy Events (Sample)

5. Click the **Save** button.

An .xml file is generated which communicates settings to the OnSSI Event Coordinator.

6. Click the **Start** button. RC-E camera events will now be forwarded to Ocularis Base.

To MODIFY PARAMETERS IN THE RC-E EVENT PROXY

1. Open the **RC-E Event Proxy** from Windows:

Start → All Programs → OnSSI → RC-E Event Proxy

2. Click the **Stop** button, to stop the proxy.
3. Click the **Get/Update Event Types from RC-E Management Server** to update any new events.
4. Make any desired changes to events (select or deselect) as well as IP address or user account changes.
5. Click the **Save** button to save the settings.
6. Click the **Start** button to restart the proxy using the new settings.
7. Click the **Finish** button when done.

Contact Information

On-Net Surveillance Systems (OnSSI)

One Blue Plaza

7th Floor

P.O. Box 1555

Pearl River, NY 10965

Website:	www.onssi.com	
General:	info@onssi.com	845.732.7900
Fax:		845.732.7999
Sales Support:	sales@onssi.com	845.732.7900 x 1
PreSales Support	salesengineering@onssi.com	845.732.7900 x 2
Technical Support:	support@onssi.com	845.732.7900 x 3
Training:	training@onssi.com	845.732.7900 x 4
Marketing:	marketing@onssi.com	845.732.7900 x 5