

Read this document if you are upgrading to Ocularis 2.0.2. For new installations, see the *Ocularis Quick Install* and the *Ocularis Installation and Licensing Guide*.

Version 2.0.2 Features

Features, bug fixes and known issues are identified in the *Release Notes for Ocularis 2.0.2*.

Upgrading to Ocularis Version 2.0.2

Summary

Upgrading to Ocularis v2.0.2 requires reinstallation of all components. *Exception:* recorders may not need to be upgraded in some cases. See [Upgrading Recorders](#) on page 2.

The installation process has changed significantly, requiring that Ocularis Base be installed first. Most upgrades will not likely need to re-license Ocularis with a new SLC. *Exception:* this depends on the version you are upgrading from. See [Do I need a new SLC for Ocularis 2.0.2?](#) below.

During the installation of Ocularis Base, you may now select an alternate SQL database different from the one Ocularis installs by default. See [Install Ocularis Base](#) on page 7.

Performing the Upgrade

With Ocularis v2.0.2, please note the following:

- There is a significant change to the methodology of the installation with v2.0.2. Ocularis files are downloaded and extracted to the Ocularis Base machine. Then, each satellite computer accesses a local webpage on the Ocularis Base machine to download and install each Ocularis component.
- Upgrade steps:
 1. [Determine if you need a new SLC](#) (see page 3)
 2. [Download the new Ocularis v2.0.2 Feature Set File](#) (see page 5)
 3. [Extract the Downloaded File](#) (see page 6)
 4. [Install Ocularis Base](#) (see page 7)
 5. [Activate Ocularis](#) (see page 8)
 6. [Download and install Ocularis components from a webpage located on Ocularis Base machine](#) (see page 9)

Documents that should be referenced during upgrade/installation:

- | | |
|--|---|
| • <i>Ocularis Quick Install Guide</i> | This document is a short list of installation steps helpful for advanced users. |
| • <i>Ocularis Installation & Licensing Guide</i> | This document explains the installation of Ocularis in detail. |
| • <i>Release Notes for Ocularis v2.0.2</i> | This document identifies new features, bug fixes and known issues included in this release. |

Details on Upgrading

- Is it not necessary to manually uninstall any of the Ocularis components in order to upgrade from an earlier version to version 2.0.2. Simply install the new version on top of the existing version. You'll be prompted to uninstall the older version and replace with the new version. Manually uninstalling components is not only unnecessary, but may cause errors or data loss.
- All Ocularis components, however, will need to be upgraded to 2.0.2. These include: Ocularis Base, *Ocularis Administrator* and all instances of *Ocularis Client*. For Ocularis IS, CS and ES the recorder event proxy also needs to be updated. (See [Upgrading Recorders](#) on page 2).
- Ocularis Base should be upgraded first. After that, the order in which you upgrade each component from an installation standpoint does not matter.
- The installation procedure will examine the system for an existing instance of each Ocularis component and if it finds it, the software will prompt you to uninstall the corresponding component during the installation process.

Upgrading Recorders

It is not necessarily required to upgrade existing recording component software:

- If you currently have NetDVMS 6.5g and are upgrading to Ocularis CS 2.0.2, you may continue to use NetDVMS 6.5g with Ocularis CS. Your NetDVMS SLC will be locked, however, and you will not be able to add new cameras to NetDVMS. The number of NetDVMS camera licenses will be deducted from the Ocularis CS RC-C recorder count.

We strongly recommend upgrading to the RC-C recording component. This upgrade, however, may be done at a later time.

You must, however, upgrade the event proxy used with RC-C or NetDVMS. See [To Update the RC-C / RC-I Event Proxy](#) on page 11.

- If you currently have NetEVS 3.1b or earlier, when you upgrade to Ocularis ES 2.0.2, you must upgrade to the RC-E 4.x recording component.
- If you currently have RC-E 4.0, you need not upgrade the recorder but **you must, upgrade the event proxy used.** See [To Update the RC-E Event Proxy](#) on page 12.
- If you are upgrading a NetDVR environment and have obtained Ocularis IS, you MUST upgrade NetDVR to the RC-I recorder. Remember that you may request multiple RC-I recorder SLCs depending on the number of cameras on the system. These additional SLCs are available upon request and at no charge.

You must, however, upgrade the event proxy used. See [To Update the RC-C / RC-I Event Proxy](#) on page 11.

- If you upgrading a ProSight-SMB environment and have obtained Ocularis PS, you MUST upgrade ProSight-SMB to the RC-P recorder. Remember that you may request multiple RC-P recorder SLCs depending on the number of cameras on the system. These additional SLCs are available upon request and at no charge.



New Ocularis SLCs ARE REQUIRED when upgrading from Ocularis version 1.x and prior (for demo, trial and retail).

Be sure to have your new SLC in hand prior to the start of any software installation.

1. Ocularis 2.0.2 SLC Requirements

Do I need a new SLC for Ocularis 2.0.2?

IF YOU HAVE A NEW INSTALLATION

All new installations require a new SLC. You will receive your SLC with the purchase of the product or (if a demo version) from OnSSI Sales.

IF YOU HAVE AN EXISTING INSTALLATION

IF YOU HAVE OCULARIS 1.X AND PRIOR:

You **will** need a new SLC.

IF YOU HAVE OCULARIS 2.0:

For Ocularis PS, Ocularis IS and Ocularis CS: You **will not** need a new SLC.

For Ocularis ES: You **will** need a new SLC for Ocularis and RC-E.

IF YOU HAVE OCULARIS 2.0.1:

For Ocularis PS, Ocularis IS, Ocularis CS, and Ocularis ES: You **will not** need a new SLC.

It is important not to begin the Ocularis Base upgrade until you have your new SLC in hand in order to avoid service disruptions.

How can I tell what Ocularis version I am using?

There are many locations to view the installed version number. One way, is to launch the *Ocularis License Activation* application located on the Ocularis Base machine.

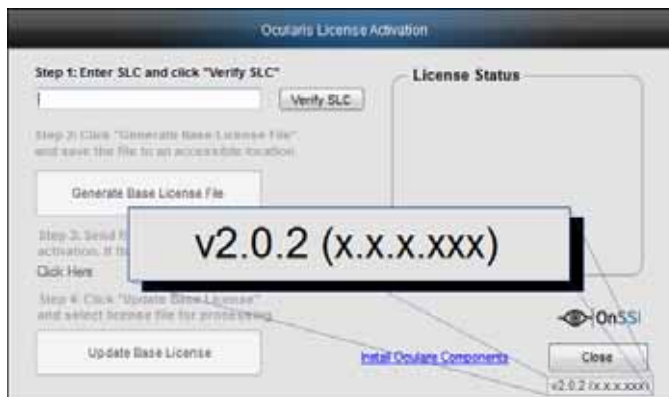


Figure 1 Ocularis Version Number

The version number is located in the lower right corner of the screen.

How do I obtain a new SLC?

IF YOU HAVE A NEW INSTALLATION

You will receive your SLC with the purchase of the product or (if a demo version) from OnSSI Sales.

IF YOU HAVE AN EXISTING INSTALLATION

IF YOU HAVE OCULARIS 1.X AND PRIOR:

Obtain a new SLC upon request.

1. Go to http://www.onssi.com/component/option,com_sup_stage/Itemid,50/
2. Fill out the form and click **Submit**.
3. You will receive an email from OnSSI with the SLC(s).

IF YOU HAVE OCULARIS 2.0:

For Ocularis PS, Ocularis IS and Ocularis CS: You **will not** need a new SLC.

For Ocularis ES: Obtain a new SLC upon request.

1. Go to http://www.onssi.com/component/option,com_sup_stage/Itemid,50/
2. Fill out the form and click **Submit**.
3. You will receive an email from OnSSI with the SLC(s).

IF YOU HAVE OCULARIS 2.0.1:

You **will not** need a new SLC.

It is important not to begin the Ocularis Base upgrade until you have your new SLC in hand in order to avoid service disruptions.

2. Download the new Ocularis v2.0.2 Feature Set File

Obtain the Ocularis 2.0.2 installation software package.

1. Open a browser and go to the *Ocularis Downloads and Resources* page at: http://www.onssi.com/ocularis_resources.
2. Review the SLC requirements and other instructions on the page.
3. Click the link for the Ocularis feature set you wish to download (e.g. **Ocularis CS v2.0.2 Download**)
4. A short web form appears. Fill out the form and click **Submit**.
You will receive an email containing the link to the download file as well as other documentation.
5. Click the link to download the Ocularis 2.0.2 file.
6. You will be prompted to save the file. Select the desired file location and click **Save**.

The file download may take several minutes depending on your connection speed. Be sure to remember the path to the directory where the file was saved.

3. Extract the Downloaded File

These steps outline the extraction of the Ocularis installation files and may be used for all Ocularis feature sets.

1. Locate the Ocularis installation file. This file may have been downloaded from the OnSSI website or obtained through other means. The file will follow the following format: Ocularis_xS.exe (where x corresponds to the Ocularis Feature Set.)

WARNING: THIS PROCESS SHOULD BE PERFORMED ON THE SYSTEM WHERE OCULARIS BASE EXISTS (IF AN UPGRADE) OR WHERE IT WILL BE INSTALLED (NEW).

2. If it is not already there, copy the installation file from step 1 above to the Ocularis Base machine.
3. Double-click the file from step 1 above to launch and begin the file extraction.

You'll see messages regarding the installation validation which may take several minutes. An *Installer Extraction Wizard* appears.

4. Click **Next**.

On the *Destination Folder* screen, you may modify the path for the installation files to be placed. Click **Next**.

5. The *Ready to Extract* screen summarizes file extraction location and size. Click **Back** to make changes or click **Next** to proceed.

Files are extracted and copied to the location specified. This may take several minutes.

When all files are extracted, a *Setup Wizard Complete* screen appears. The installation files have been downloaded and unpacked. No applications or components have been installed.

6. If you choose to:

- a. Install Ocularis Base now: make sure the corresponding checkbox is selected and click **Finish**. Proceed to [Install Ocularis Base](#) on page 7.
- b. If you choose to install Ocularis Base later: uncheck the *Install Ocularis Base* checkbox and click **Finish**. Proceed to [Install Ocularis Base](#) on page 7.

You have completed the extraction of the Ocularis installation files.

4. Install Ocularis Base

Ocularis Base must be installed first as this installation will set up and configure the environment to install the other Ocularis components.

WARNING: THIS PROCESS SHOULD BE PERFORMED ON THE SYSTEM WHERE OCULARIS BASE EXISTS (IF AN UPGRADE) OR WHERE IT WILL BE INSTALLED (NEW).

1. To install Ocularis Base after extracting the installer files (from 3. *Extract the Downloaded File* above), go to the directory where the Ocularis xS files were extracted to and launch the file.
2. If upgrading Ocularis, a message that a previous installation of this software has been detected. Click **Yes** to proceed with the installation. The *Ocularis Base Setup Wizard* screen appears. Click **Next**.
3. The *License Agreement* appears. Please read, click the "I accept.." radio button and then click **Next**.
4. Select between the *Demo* or *Retail* version of Ocularis Base and click **Next**.
5. On the new *SQL Server instance* page, the majority of users will use the default selection.

SQL Server Options Defined:

Use Ocularis default SQL Server instance – this default option will:

- In new installations, install SQL Server 2008 Express for use with Ocularis
- For upgrade installations, use the existing SQL Server Express 2008 Ocularis database

Edit System Administrator login - If you wish to modify the administrator login for the SQL Server instance, click the **Edit System Administrator** login checkbox. The corresponding fields will open to allow entry of the required criteria.

Use another SQL Server 2008 instance - If you have an existing SQL Server database that you wish to use, you may select this option. You will be required to enter login credentials for this SQL Server instance. **DO NOT USE THIS OPTION IF YOU ARE UPGRADING UNLESS YOU ARE PREPARED TO MANUALLY IMPORT THE OLD DATABASE TO THE NEW SQL SERVER INSTANCE.**

When ready, click **Next**.

9. On the new *Select Bookmarks Folder* screen, you have the option to specify the location for the storage of Ocularis Bookmarks. Change the default location if necessary. When ready, click **Next**.
10. On the *Select Destination Folder* for Ocularis Base you may modify the directory path for the Ocularis Base files. We recommend using the default but you may modify the path here. Click **Next**.
11. The next screen summarizes the installation folders and size. Click **Back** to make changes or click **Next**.

The Ocularis Base files are installed to the specified directory and may take several minutes. A new installer website is also created.

When installation is completed, the *Setup Wizard Complete* for Ocularis Base screen appears.

12. You are given the option to activate the Ocularis license upon completion of the wizard. It is recommended (but not mandatory) to do this at this time. Ocularis must be licensed before use.
 - a. If you choose to license Ocularis now, verify that the *Activate License* checkbox is checked and click **Finish**.
The *Ocularis License Activation* application is automatically launched. Proceed to [Activate Ocularis](#) on page 8.
 - b. If you choose to activate the Ocularis license later, uncheck the *Activate License* checkbox and click **Finish**.
When you are ready to license Ocularis, launch the *Ocularis License Activation* application from the desktop icon. Proceed to [Activate Ocularis](#) on page 8.

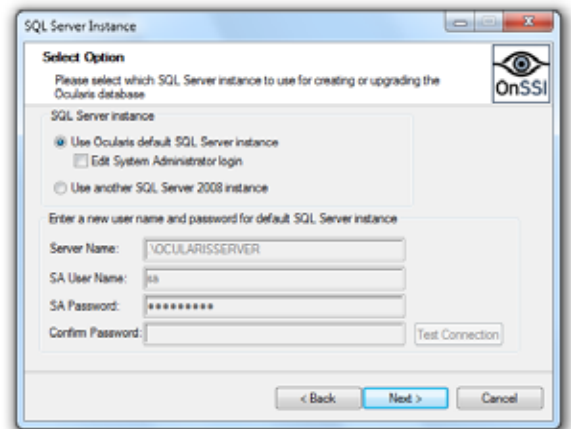


Figure 2 SQL Server Instance

5. Activate Ocularis

Reactivating or updating the Ocularis license is only necessary when:

- You are upgrading from Ocularis version 1.x or prior (any Ocularis feature set)
- You are upgrading from Ocularis ES version 2.0 or prior
- You are using a demo version of Ocularis.

If you need to update the Ocularis license: launch the *Ocularis License Activation* application, enter the SLC and click **Verify SLC**.

For Demo versions and Retail versions with no modifications to the license: that is all that is required. You are done.

For Retail versions with modifications to component licenses (e.g. new cameras), you should have received a new .v2c file with your Ocularis SLC. Click the **Update Base License** button, select the .v2c file and click **Open**.

6. Upgrading Ocularis Components

Once Ocularis Base has been installed and licensed, the order of installing the remaining components does not matter. All components are downloaded from a webpage installed on the Ocularis Base machine. All Ocularis components may be installed from this local web page.

- [Upgrading the Ocularis Administrator](#) on page 11
- [Upgrading the Ocularis Client](#) on page 11
- [Upgrading the Recording Component Event Proxy](#) on page 11
- [Upgrading the Recording Component](#) on page 13

GENERAL INSTRUCTIONS FOR DOWNLOADING COMPONENTS


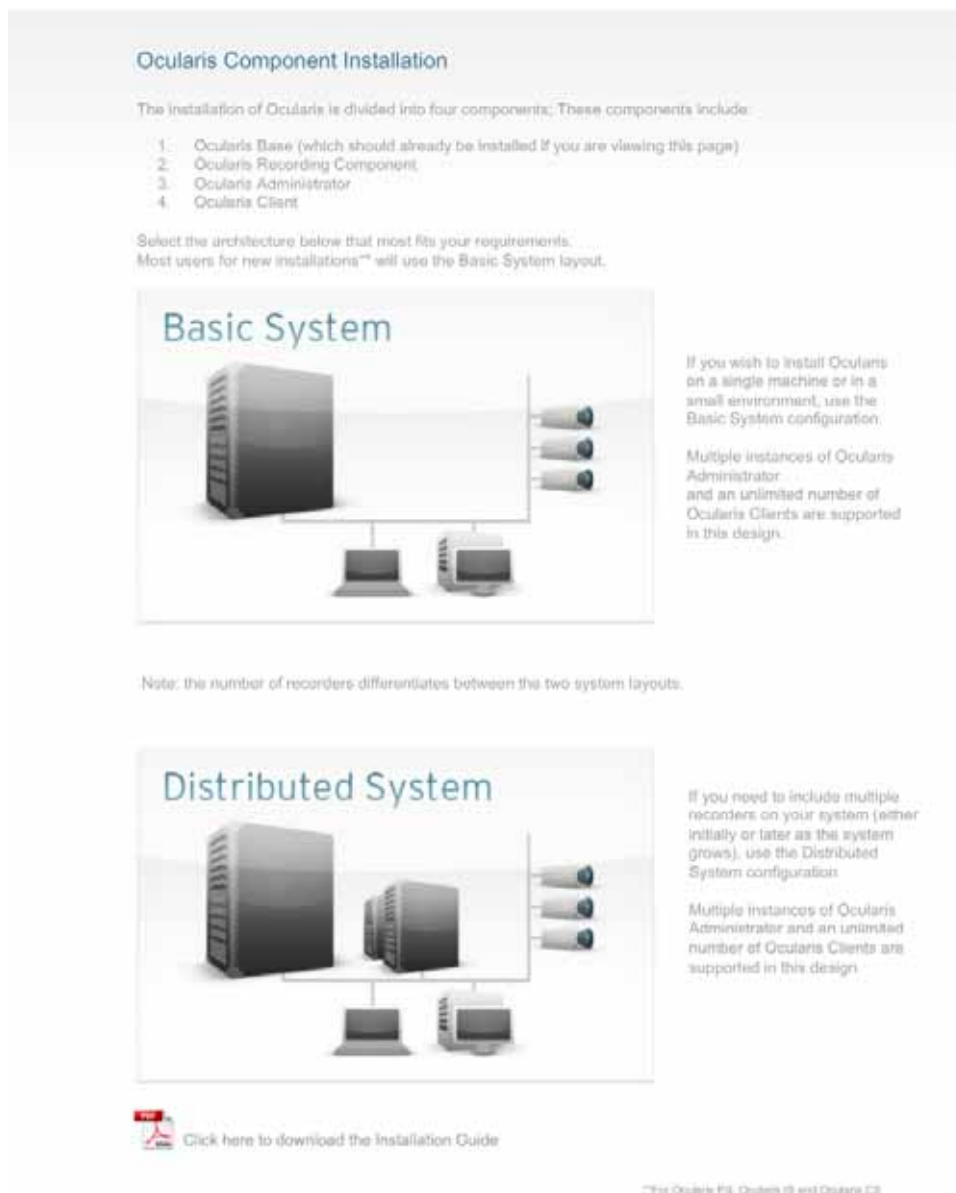
Note: Be sure to turn off any Firewalls running on the Ocularis Base machine.

1. From the local machine on which you want to install the Ocularis component, access the download webpage located on the Ocularis Base machine through a browser using the following URL:

`http:// [NAME] : [port] /OcularisService/InstallerWebsite/index.html`

where **[NAME]** is either the IP Address or computer name of the Ocularis Base machine and port is the IIS port number. In most cases, the default port 80 is used and it is not necessary to enter it here.

The following web page appears:

 OnSSI Install Ocularis Components

Ocularis Component Installation

The installation of Ocularis is divided into four components; These components include:

1. Ocularis Base (which should already be installed if you are viewing this page)
2. Ocularis Recording Component
3. Ocularis Administrator
4. Ocularis Client

Select the architecture below that most fits your requirements.
Most users for new installations** will use the Basic System layout.

Basic System


If you wish to install Ocularis on a single machine or in a small environment, use the Basic System configuration.

Multiple instances of Ocularis Administrator and an unlimited number of Ocularis Clients are supported in this design.

Distributed System

If you need to include multiple recorders on your system (either initially or later as the system grows), use the Distributed System configuration.

Multiple instances of Ocularis Administrator and an unlimited number of Ocularis Clients are supported in this design.

 [Click here to download the Installation Guide](#)

**For Ocularis P3, Ocularis B and Ocularis C3

Figure 3 Install Ocularis Components Web Page

2. Click on 'Basic System'. This option should be used by most Ocularis PS, IS and CS installations.
3. Select the component you wish to download and install.
4. Select the '[Click here to download component](#)' link when you are ready to download the corresponding component to the local machine.
5. Follow the on-screen prompts.

UPGRADING THE OCULARIS ADMINISTRATOR

1. Follow the steps above in 6. *Upgrading Ocularis Components*. Be sure to be at the pc on which you wish to install Ocularis Administrator.
2. From the Basic Installation page, click the *Ocularis Administrator* component.
3. Choose the **Upgrade** option.
4. Run the installation and follow the wizard prompts. The process will detect existing versions of Ocularis Administrator and prompt you to delete the old version and install the new version.

UPGRADING THE OCULARIS CLIENT

1. Follow the steps above in 6. *Upgrading Ocularis Components*. Be sure to be at the pc on which you wish to install Ocularis Client.
2. From the Basic Installation page, click the *Ocularis Client* component.
3. Choose the **Upgrade** option.
4. Run the installation and follow the wizard prompts. The process will detect existing versions of Ocularis Client and prompt you to delete the old version and install the new version.

UPGRADING THE RECORDING COMPONENT EVENT PROXY

For Ocularis IS, Ocularis CS and Ocularis ES v2.0.2, the recorder event proxy must be upgraded. After an upgrade of the event proxy, data settings should be saved and it is not necessary to reconfigure proxy parameters.

- For Ocularis IS and Ocularis CS, see [To Update the RC-C / RC-I Event Proxy](#) below.
- For Ocularis ES, see [To Update the RC-E Event Proxy](#) below.

To Update the RC-C / RC-I Event Proxy

These instructions assume that you have updated Ocularis Base and are located at the system on which you wish to install the RC-C / RC-I Event Proxy.

1. From the Basic or Distributed Installation webpage, click either:
 - o the [Recording Component](#) DVD symbol at the bottom of the screen
 - o the 'Click here to download component' link within the pop-up assistant for the [Recording Component](#).
2. When you are asked if you want to continue, click **Yes**.
3. Click **Upgrade** to install only the event proxy.
4. When you are prompted to run or save the file, you may choose to either run it now or save it and run the installation later.
5. The previous version of the event proxy should be detected. A notice will appear asking for your confirmation to uninstall the older version and install the new version. Click **Yes**.
 - a. An "Are you sure you want to remove the RC-C / RC-I Event Proxy...?" screen appears. Click **Yes**.
 - b. When the uninstall is complete, click **OK**.
6. The *Welcome to the RC-C RC-I Event Proxy Setup Wizard* appears. Click **Next**.
7. The *Select Destination Folder* screen appears.

You may leave the default directory path or change it if necessary according to your organization. If installing the **Demo** version, keeping the default path is recommended. Click **Next**.

8. The next screen, *Ready to Install the Program*, will confirm the file path and disk space requirements. Click **Next** if OK. Click **Back** to make changes to the directory path or the folder.

The *RC-C / RC-I Event Proxy* software is installed.

9. When the *Event Proxy Setup* is completed, the *Setup Wizard Complete* screen appears. Click **Finish**.

To Update the RC-E Event Proxy

These instructions assume that you have updated Ocularis Base and are located at the system on which you wish to install the RC-E Event Proxy.

1. Access an alternate webpage on the Ocularis Base machine:

`http://[NAME] : [port] /OcularisService/InstallerWebsite/sysadmin.html`

where **[NAME]** is either the IP Address or computer name of the Ocularis Base machine and port is the IIS port number. In most cases, the default port 80 is used and it is not necessary to enter it here.

2. From the webpage, click the link for *RC-E Event Proxy* in the Plugins section.
3. When you are prompted to run or save the file, you may choose to either run it now or save it and run the installation later.
4. The previous version of the event proxy should be detected. A notice will appear asking for your confirmation to uninstall the older version and install the new version. Click **Yes**.
 - a. An "Are you sure you want to remove the RC-E Event Proxy...?" screen appears. Click **Yes**.
 - b. When the uninstall is complete, click **OK**.
5. The *Welcome to the RC-E Event Proxy Setup Wizard* appears. Click **Next**.
6. The *Select Destination Folder* screen appears.

You may leave the default directory path or change it if necessary according to your organization. If installing the **Demo** version, keeping the default path is recommended. Click **Next**.
7. The next screen, *Ready to Install the Program*, will confirm the file path and disk space requirements. Click **Next** if OK. Click **Back** to make changes to the directory path or the folder.

The *RC-E Event Proxy* software is installed.
8. When the *Event Proxy Setup* is completed, the *Setup Wizard Complete* screen appears. Click **Finish**.

UPGRADING THE RECORDING COMPONENT

Upgrading the Recording Component for 2.0.2 is only necessary when:

- You are upgrading from an earlier version of Ocularis (v1.x and prior) or
- Migrating from ProSight-SMB, NetDVR, NetDVMS, or NetEVS

When upgrading the recording component, several steps are required:

1. Obtain a New Recording Component SLC and DLK File (and for Ocularis ES, also a new .lic file)

For Ocularis PS, IS and CS:

2. Backup Existing Configuration Data
3. Install the Recording Component Software and New SLC
4. Import the new DLK file
5. Restore the NVR Configuration (if necessary)

For Ocularis ES:

See [Ocularis ES Instructions](#) on page 16.

1. To Obtain the Recording Component SLC and new DLK File

For any Ocularis Feature Set, the Ocularis recording component, requires a separate SLC. This SLC is provided to you when you receive your Ocularis 2.0.x SLC. When doing an upgrade from NetDVMS 6.5x or 6.0, the new SLC will be for the RC-C recorder. Upgrading the recording component will disable existing NetDVMS licenses.



Once the NVR SLC has been upgraded, the old SLC is disabled.

2. Backup Existing NVR Configuration Data (Ocularis PS, Ocularis IS and Ocularis CS)

The following information applies if upgrading from one RC-C version to another as well as if upgrading to RC-C from a NetDVMS, NetDVR or ProSight-SMB NVR. Instructions given here use NetDVMS in the examples.

Prerequisites

Take note of your new NVR SLC (Software License Code) that you obtained from OnSSI. The SLC of the NVR changes when the software version number changes. For RC-C 7.0, the prefix of this SLC is: 6A0

When you install a new version of RC-C, it will inherit the configuration from your old version. In some cases, however, the old configuration is not retained. We strongly recommend you make a backup of your existing NVR data prior to performing the upgrade.

The following describes a backup of NetDVMS versions 6.5x and earlier, which is may be needed when upgrading to RC-C version 7.0.

1. Create a folder called *Backup* on a network drive, or on removable media.
2. On the NetDVMS NVR machine navigate to C:\Program Files\OnSSI\NetDVMS.
3. Copy the following files and folders into your *Backup* folder:
 - All configuration (.ini) files
 - All scheduling (.sch) files
 - The file *users.txt* (only present in a few installations)
 - Folders with a name ending in *...ViewGroups*

Note that some of the files/folders may not exist if upgrading from old software versions.



**DO NOT MANUALLY REMOVE NETDVMS.
Manual Removal of NetDVMS is NOT Necessary and can cause data loss
during the upgrade.**

Removing the Current NetDVMS Software Is Unnecessary

In most cases, you do not need to manually remove the version of NetDVMS before you install RC-C. The old NetDVMS version is removed when you install the RC-C. Note, however, that when upgrading from NetDVMS versions earlier than 6.0, this software must be removed manually before installing a new version of RC-C.

3. Install the Recording Component Software and New SLC (Ocularis PS, Ocularis IS and Ocularis CS)

1. Follow the steps above in 6. *Upgrading Ocularis Components*. Be sure to be at the pc on which you wish to install the recording component.
2. From the Basic Installation page, click the *Recording Component* icon.
3. Choose the **New** option. (Choose **New** to upgrade the recorder since this option will install both the recorder and its corresponding event proxy).
4. Run the installation and follow the wizard prompts. The process will detect existing versions of the recorder and prompt you to delete the old version and install the new version.

Note:

During the installation, you will be prompted to uninstall the older version. This includes uninstalling NetDVMS/NetDVR/ProSight-SMB. Click 'Yes' to confirm the uninstallation. The installation will also prompt you for your new RC-x SLC that was obtained in *from OnSSI*.

4. Import New DLK File (for Ocularis PS, Ocularis IS and Ocularis CS)

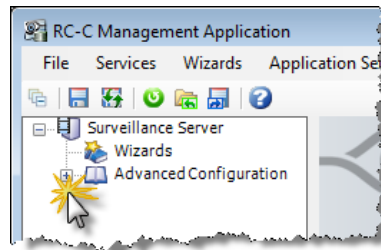
Once the recording component installation is complete, import the new DLK file that was obtained from OnSSI.

1. Launch the *Management Application* from the new desktop icon.
2. Select **File** → **Import DLKs...**
3. Browse to the location where you placed the .dlk file you received in the email from *To Obtain the Recording Component SLC and new DLK File* on page 13.
4. Select the .dlk file and click **Open**.

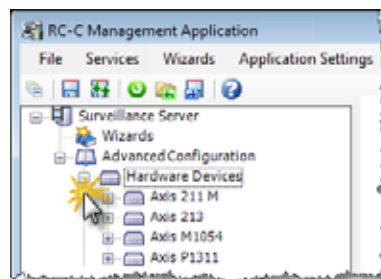
**5. Verify Upgrade Data (for Ocularis PS, Ocularis IS and Ocularis CS)**

Verify the upgrade and confirm whether your configuration was updated:

1. Open the *Management Application* (if it isn't already open).
2. Expand the node for **Advanced Configuration** in the Navigation Pane.



3. Expand the **Hardware Devices** node.




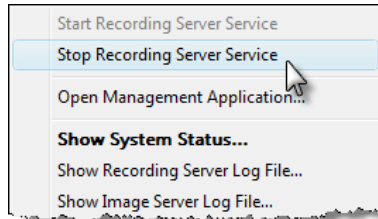
Your devices from the older NVR should appear. If they do not appear, proceed to *Restore Camera Configuration (if necessary)* below.

6. Restore Camera Configuration (if necessary) (for Ocularis PS, Ocularis IS and Ocularis CS)

If, for some reason, after installing the new software version you have lost your camera configuration, you can easily restore your old configuration, provided you have followed the previous instructions. Configuration is stored in a unique format in RC-x, so your old configuration will have to be converted to the new format before you can use it.

These steps apply only to: Ocularis PS, Ocularis IS and Ocularis CS. Ocularis CS is used in the example below.

1. Close the *Management Application* if it is open.
2. Stop the Recording Server Service.
 - a.) Right-click the Recording Server icon in the Windows System Tray. 
 - b.) Select **Stop Recording Server Service**.



c.) The icon should now appear as:



3. Make a copy of the contents of the following directory:

C:\ProgramData\OnSSI\RC-C

Note:

On Windows 2003 Server, the location is: C:\Documents and Settings\All Users\Application Data\OnSSI

Note:

These directories may be hidden from view. If you cannot see the folder, be sure to modify folder options to display hidden files and folders.

4. Delete the contents of the folder:

C:\ProgramData\OnSSI\RC-C

Do **NOT** delete the folder.

5. Open a command prompt:

- a.) Click Windows' Start menu
- b.) Type `cmd` in the *Search* box.

6. Change directories to: C:\Program Files\Onssi\NetDVMS

7. Run the Configuration Upgrader executable **TWICE** using the folder from Step 3 as the destination parameter.

Type into the command window:

```
Configurationupgrader.exe c:\ProgramData\OnSSI\RC-C Press [ENTER]
```

```
Configurationupgrader.exe c:\ProgramData\OnSSI\RC-C Press [ENTER]
```

This should copy the necessary NetDVMS configuration files as well as create a `configuration.xml` to the C:\ProgramData\OnSSI\RC-C directory.

Note:

It may take a few moments for the `configuration.xml` file to appear.

8. Close the command window.
9. Open the *Management Application* to verify the import of the configuration.

Ocularis ES Instructions

If the upgrade to the Ocularis ES recording component is necessary, each component within the RC-E recording component, will need to be upgraded (Management Server, Failover Server(s), Recording Server(s), etc.).

We recommend using these instructions in addition to those found in the *Ocularis Installation and Licensing Guide* when upgrading a complex platform such as Ocularis ES.

Additional requirements: .NET 4.0 and Windows Installer 4.5

Use the following guideline for the upgrade:

1. Install SQL Management Studio Express (or equivalent tool) and make a full SQL database backup. (see page 423 of the NetEVS manual for instructions).
2. Using Windows Add/Remove Programs utility, remove the following:
 - a. NVR Download Manager
 - b. OnSSI NetEVS Server (Management Server) NOT THE DATABASE server.
3. Using the Task Manager's Processes Tab, ensure that no instances of SCMREGISTER.exe are running.
4. Using Windows Add/Remove Programs utility, remove:
 - a. the NetEVS Recorder from all machines. **Be sure to elect to 'Keep Recorded video'**.
 - b. The NetEVS Manager (Management Client)
5. Reboot the Management Server machine.
6. Delete the NetEVS and NVR Download Manager folders.
7. Install the RC-E 4.0 Management Server (make sure you have your new license for this step).
8. Launch the Recorder Download page to install the remaining components. This page can be accessed from any web browser. Type in the following URL:

http://[Management Server address]:[port]/installation/admin

For instance:

http://192.168.11.244/installation/admin

This page can be access from any pc with network connectivity to the RC-E Management Server machine.

9. From the *Recorder Downloads* installation webpage:
 - a. Install the Ocularis RC-E recording server software. This component may be installed on multiple servers to support multitudes of cameras. When you install this component, you will need to identify the location (IP Address) of the RC-E Server (Management Server)
 - b. Install the RC-E Management Client (RC-E Manager)
 - c. Install the Log Server.
 - d. Update to the latest video device driver pack. (if necessary)
 - e. Install additional RC-E Recording Servers to be used as failover servers (optional).
 - f. Install the RC-E Event Proxy software on the same pc as the RC-E Management Server.



Figure 4 Download Manager